

Meet artists | Experience creativity | Buy art

A hand holding a paintbrush is visible on the left side of the image, positioned over a large, round, white artist's palette. The palette is covered with thick, textured strokes of various colors including brown, blue, red, yellow, and white. In the background, several paintbrushes are scattered on a surface. A large, bright yellow circle is centered over the palette, containing the event title and dates.

NORFOLK OPEN STUDIOS 2023

23 SEPT-08 OCT
norfolkstudios.org.uk

Free to visit

WELCOME TO NORFOLK OPEN STUDIOS 2023



A Norfolk & Norwich Festival Initiative



Supported using public funding by
**ARTS COUNCIL
ENGLAND**



NORWICH
City Council

Norfolk & Norwich Festival Principal Funders

Funder  **Norfolk** County Council



Norfolk Open Studios is run by Norfolk & Norwich Festival through its Festival Connect & Create initiative. The Festival manages Norfolk Open Studios in partnership with and for the benefit of Norfolk artists and makers. Norfolk & Norwich Festival Trust, Norwich Guildhall, Gaol Hill, Norwich, NR2 1JS. T. 01603 877750 W. nnfestival.org.uk

Registered Charity Number 1164424.

Brochure Design: Anne Reekie. Print: Page Bros Print.

Details correct at time of print. Please recycle once you're finished. 

A BIG THANK YOU

To all the artists, makers, and schools taking part who help make this event one of the highlights of the Norfolk calendar! Another thank you to the various organisations that help support the scheme, as well as our volunteers, without whom Norfolk Open Studios could not happen.

Norfolk Open Studios is a much-loved annual event that celebrates the creativity and passion of Norfolk artists and makers. We invite you to step out into Norfolk to explore the county and its amazing artists.

Studios are FREE to visit, and this brochure contains important details for everyone taking part. Open Studios brings together artists and makers at all stages of their careers, from emerging artists though to established professionals. Painters, sculptors, weavers, carpenters, jewelers, and more can be found working from professional studios, homes, garages, gardens, and sheds. It's a chance to get a behind-the-scenes look at how artists work, ask questions, and maybe even buy an original artwork directly from the creator.

You can even get your own creative juices flowing. Some of our Open Studios artists will be running their own events, demonstrations and workshops. Get a hands-on opportunity as they share their creative practices with you; artist events can be found on pages 14–17.




Our Art Trails provide a wonderful curated way to navigate the six districts across Norfolk. Each Trail offers a memorable day out; follow along to visit studios and stop off for refreshments along the way to enjoy the stunning autumnal weather. Art Trails can be found at the end of each district's listings.

Norfolk Open Studios is open to all, and artists could not be more excited to open their doors to meet you. Whether you manage to see one or many, we hope you enjoy your Open Studios experience.

Visit our website

For the most up-to-date information we advise checking online before setting out on your visits, or call the artist. Full directions to each studio are also on our website.






 [norfolkstudios](https://www.facebook.com/norfolkstudios)
 [@norfolkstudios](https://twitter.com/norfolkstudios)
 [@norfolkopenstudios](https://www.instagram.com/norfolkopenstudios)

norfolkstudios.org.uk



- 06 Preview exhibitions
- 08 Meet the artists
- 14 Events & demos
- 18 How to use this guide
- 20 Map
- 22 Breckland artists
- 28 Broadland & Great Yarmouth artists
- 34 North Norfolk artists
- 42 Norwich artists
- 50 South Norfolk artists
- 56 West Norfolk artists
- 62 A-Z of artists

 [norfolkstudios](#)
 [@norfolkstudios](#)
 [@norfolkopenstudios](#)

norfolkstudios.org.uk



PREVIEW EXHIBITIONS

Need help planning which studios to visit? Come along to one of this year's preview exhibitions, where you can meet the artists, view their work, and even buy a piece to take home with you.



The Forum

Norwich

Open 15 – 20 Aug | 9.30am–6.30pm (20 Aug closes 4pm)

Showcasing artwork by this year's Norfolk Open Studios artists from across the county. Enjoy an exciting and diverse exhibition and plan for your Open Studios visits. A range of mediums will be on display, from paintings to sculptures, pottery, printmaking, and much more. There'll be something for everyone to enjoy, all under one roof! This popular exhibition is open to all to visit and is an enjoyable way to experience the creative talent from across Norfolk. All work is for sale. Artists will be on hand throughout the week to answer questions and discuss their practices.

The Forum, Millennium Plain,
Norwich NR2 1TF
theforumnorwich.co.uk

Supported by

the
forum

Arboretum Gallery

South Norfolk

Open 2 – 10 Sep | 9am–4pm

Enhance your Open Studios experience with a visit to the South Norfolk preview exhibition presented at The Arboretum Gallery. The Arboretum Gallery is a collaborative project from a group of furniture makers looking to promote their own designs and the use of native and local timbers, with a focus on contemporary furniture. Explore the variety that the artists and makers of South Norfolk have to offer in this serene setting.

High House Farm Barn, Farm Road,
Heckingham NR14 6QU
arboretumgallery.co.uk



MEET THE ARTISTS

Norfolk Open Studios offers a unique opportunity to meet local artists and find out what inspires them, how they work, and what makes them tick. Read on for the stories behind the art.



© Kat Mager

Valuing nature

Interview with artist Lizzie Kimbley

Could you tell us a little bit more about your practice?

I'm a textile artist and weaver based in Norwich. I work with woven textiles, natural dyes and basketry techniques to create contemporary artworks exploring responsible design and connection to place and nature.

I'm conscious of the volume of waste sent to landfill each year, and the need to value our natural resources. I have a materials-led approach often using natural found materials or those leftover from other makers' design processes.

My current work 'Walking Blickling' is a collection of basketry pieces made in response to walking and gathering in the grounds and gardens of Blickling Hall. Materials such as daffodil, crocosmia and sweet flag leaves are gathered, dried and made into cordage that is woven into textured nest-like forms and wall pieces.

Lizzie Kimbley (123), see artist listing on page 48.



Environmental consciousness plays a big role in your work, could you tell us a bit about the journey that sparked that interest?

The drive to work responsibly was inspired by a research project while I was studying Textile Design at Norwich University of the Arts. I wanted to explore alternative methods to our current 'take – make – use – waste' system and was experimenting with different materials and low-impact processes to work more circularly. I wanted to design and make work with the whole life cycle in mind, so materials are reclaimed or will biodegrade after use and no waste is left behind.

As 'waste' is such an abundant resource, I started experimenting with other makers' leftover materials, such as willow tips from a local furniture designer-maker. I started repurposing these materials in my woven work. This, and a love of walking, has led me to working with basketry techniques and locally gathered plant materials.

You mentioned how walking and being in nature plays a role in your practice. Living in a rural area like Norfolk, how does that influence the work?

I think it's a huge influence. I live at the edge of Norwich and feel very fortunate to walk in the nearby marshes and meadows every day. I love the rhythm and repetition of walking, how you can slow down, pay attention to your surroundings and lose yourself in the moment. This sense of calm and reflection is echoed in my making process and the work I make.

This is your second year taking part in Norfolk Open Studios. Is there something about the programme that draws you to it?

It's a great opportunity to open your studio doors, welcome people in and share what you love to do. I love meeting new people, making new friends and connections, and all the chance conversations you have. As well as the opportunity to visit other artist's studios!





Creativity in the barn

Interview with Barrington Farm artist Barry, and curator Sarah

How long have you been coming to Barrington Farm?

B: I've been coming here every Friday since 1998 and do all kinds of drawings and ideas.

What are you working on at the moment?

B: At the moment we're working on a drama [performance] for the Harvest Festival. I've got some materials - metal, plastics and cardboard so I can make a vintage combine harvester, either in yellow, green or red.

How does it feel to be a part of Open Studios?

B: I enjoy it thoroughly. All the visitors come and look at my work in a warm, friendly and welcoming manner and we sometimes sell some work. I always have a smile on my face, which is the important thing.

Have you had a lot of work in Open Studios before?

S: Every year we have at least one artwork by every artist so everyone's represented. Barry sometimes has more than one because he's very prolific, we've sold lots of his over the years.

Could you tell us a bit about Barrington Farm and where it came from?

S: Barrington Farm is a supported studio for adults with learning disabilities, founded in 1987 when the owner of the care home next door bought the farm. Their son came back from the Slade School of Art in London and was working in here with some friends. Michael Smith [artist] came over from the home and wanted to see what they were doing and to join in. He painted a cow on the side of a cart and it gave them the idea to set the space up as an art centre. Last November Michael won the Lifetime Achievement Award at the Norfolk Arts Awards.

We provide the best materials and the best staff to offer our artists the chance to make what they want to make - we don't see it as therapy or just an activity but recognise it as a meaningful, serious activity where people can really discover their own creativity and make their own choices, and that's continued throughout the last 35 years.

How does it feel to open the space every year?

S: It's a really important part of our calendar, and we love it. Because we are quite remote here, it's a lovely chance to open our doors and welcome in friends, supporters and the public. We get to work with the expertise of the Festival and focus on making a great exhibition, filling the walls with art, Royal Academy style.

This year you're putting on a harvest festival and exhibition committee alongside Open Studios?

S: Yes, we got funding which will enable us to set up an exhibition team to work out where things will go, what we will choose, how it will be framed, if there are any themes, etc, and get the artists involved in that whole process.

What're you hoping to get from the Harvest Festival?

S: We are looking at the heritage of rural Norfolk harvest traditions. Over the summer the artists are devising and rehearsing the performance we'll be putting on. There'll be food, music, art and some creative workshops. We'll also be going into a local school and delivering workshops with our artists. There will be lots happening, and all are welcome!

What is it about Open Studios that brings you back each year?

S: For us the main thing is that people come, and they can see and appreciate the work. It's so exciting when someone buys work or tells an artist that they love something they have made. People can see the artists working in their studio environment. It is a platform for every artist here and it gives them a purpose and they get feedback and connect with other artists and share their creativity with others. It's important for every artist to have that outlet and feel important and valued, and you never know who will walk through the door. Not everyone has the opportunity to exhibit their work in exhibitions but at Open Studios, everyone can be involved and invite their friends and families.



Exploring tension with clay

Interview with ceramic artist
Caroline Chouler-Tissier

Can you tell us a bit about who you are and the work you make?

I work predominantly in clay. I'm responding to the emotional experiences of grief, and the trauma that is part of that. I've been exploring making processes that exploit the rawness and tension of pushing clays through the disruptive surface of a metal extrusion plate. Particularly since the pandemic, there's been an emphasis on how we talk about trauma and grief, and an openness to how we now respond to each other, and I'm really encouraged by this.

What kind of clays do you work with?

I was using a lot of porcelain during my MA, contrasting the delicious whiteness with a dark volcanic clay, and I'm currently researching clays that fire at lower temperatures, like terracotta and some of the local clays. When they are forced through the rough extrusion plates together, unexpected things happen. The rawness of the rough clays and the different tones of the white from the porcelain create moments of brightness and the kind of earthiness that I think really grounds us.

Working with clay and the low-tech equipment you use is a very hands-on process. Is there something in this that you enjoy in your work?

I really love the challenge of making the extrusion plates and seeing how they cut and disrupt the clay. I use a thin steel sheet, tin snips and a drill. I have a carefully designed idea of the profile that will create the two surfaces I want to explore: the inside and the outside of my work. They respond to the idea of how we present to the outside world and how we attempt to keep some of this hidden.

In terms of the process, you have an idea of the profile you want to make, yet the pieces themselves look intuitive. Is your process intuitive or is it quite controlled?

When I add the different clays to the old extruding machine, I know what I'm hoping for as I wind the clay through and it emerges through the extrusion plate, but when the clay comes through and it's different it begins to offer something new. It demands of me to be very present, in the moment, and to consider how I can best respond to it. It is a challenge and demands all my skill. It's about being clear and disciplined and working to the plan. At other times I might set out to make a large wall piece or a bowl form with the pieces used as a rim, but then the clay comes out in a particular way, and it may suggest something very different. There are things that happen that I just want to go with. I draw a lot and have plans for all kinds of shapes. It's very exciting, constantly learning about things that happen in the making process and being brave and daring to take risks.

You mentioned how the Norwich landscape affects your work. Is there something about being in Norfolk that inspires your work?

Definitely, and I don't think I really anticipated this, but the open spaces of Norfolk provide space to explore and to breathe. I've got a residency with GroundWork Gallery in King's Lynn over the Summer and I'm really looking forward to exploring more of the landscape and seeing how the geology and the geography of the area is influenced by climate. I'm also looking at how the extraction of natural materials is influencing the environment and people's lives.

This is your second year taking part in Open Studios, is there something about taking part that brings you back?

I think the punctuation of the year is good, it's an opportunity to reflect on what I've done and to work out where I'm up to. It's a chance to visit other artists, to make new connections and have great conversation, and for people I've met over the year to visit my studio and see my new work. For the exhibition this year alongside my ceramic work I'm curating an installation showing a short film and the monologue I've written with Norwich Theatre as part of 37 Plays Climate Project. This is definitely a result of being surrounded by the creative opportunities of the area.

EVENTS & DEMOS

Norfolk Open Studios offers a host of opportunities to not only view, buy and commission pieces of art and craft, but also to learn more about the creative process and experience something new in our wonderful county. Why not have a go at creating your own masterpiece or trying a new technique at some of the special events taking place across the county?

Jayne Bunting (p15)



010 SANDRA ROBERTS Stamp & Craft Studio

Contact:
studiostampers@btinternet.com
07806 616704

Papercrafting Workshops

Sat 23 Sep – Fri 6 Oct | 11am-1pm | £10-£15

Create handmade cards for any occasion. All materials provided and kits available to purchase. Classes available all year round.

Mixed Media Workshops

Sun 24 Sep & Sat 30 Sep | 11am-3pm

(other times by arrangement) | £23
Booking required

Working with textures, hands on learning, you'll create your own personalised masterpiece. All materials provided. Bring apron, no loose sleeves.

Christmas Creativity Week

1-6 Oct | Free

Daily demonstrations creating a wide variety of festive projects, including home decor and gifts. Classes available to book year round.

019 MARIE DAWE

Contact:
emdawe@aol.com
07901 695534

Glass Star Making Workshop

Thu 5 Oct | 10-11.30am & 2-3.30pm | £25

Booking required

Make two fused glass Christmas stars, lots of decorative elements to make your's individual.

023 JAYNE BUNTING

Contact:
jnbunting@me.com
07717 666151

Go On Have A Throw!

23, 24 & 30 Sep | 1, 7 & 8 Oct | Free

Watch a demonstration and then throw your own pot. £10 charge if you require your pot to be fired.

Go on, Pinch me!

23, 24 & 30 Sep | 1, 7 & 8 Oct | Free

Booking required

Watch a demonstration and then make your own pinch pot. £10 charge if you require your pot to be fired.

026 ST BARTS, BRISLEY

Contact:
katie.longwill@gmail.com
07967 664690

An Introduction to Chinese Brush Painting

Various times – please email | Free

The Gables, Gateley Road

Meet the artist and learn about the materials and techniques used in Chinese Brush Painting.

Introduction to 'Affinity Photo 2'

Various times – please email | Free

One photograph edited nine different ways using 'Affinity Photo 2'.

Fakenham and District Flower Club - Floral Demonstration

Various times – please email | Free

The Fakenham and District Flower Club will be providing a display in the church and putting on a floral demonstration.

Keep an eye on our website for possible further events and for the most up-to-date information.
norfolkstudios.org.uk

027 Art students at ACORN PARK SCHOOL

Contact:
paula.rei@acornparkschool.co.uk
07503 935769

Aging and Decay

10 & 11 Oct | 4-4.30pm | Free

Booking required

Acorn Park School / Art room

Experimental art using mixed media, paintings, drawing and photographs of the different art areas developed in our school.

Art Workshop with Sensory Experiences

10 & 11 Oct | 4.30-5.30pm | Free

Booking required

Using different materials and texture, explore different textures and effects based on emotions.

039 DIANA NG

Contact:
diana@ngpottery.com
07516 503016

Pottery: Throwing Taster

23, 24, 30 Sep | 1, 7, 8 Oct | 11am or 2pm

£15

Booking required

30 mins quick session on the potter's wheel.

diana@ngpottery.com / 07516503016

044 HELEN HARRISON

Contact:
helenmaryharrison@gmail.com
07708 720072

Paint A Meadow In Acrylic

25 & 30 Sep | 2-5pm | £25

Booking required

Create a pleasing piece of art to take home and enjoy. All materials included. All abilities welcome.

047 CORRIN TULK

Contact:
corrin@corrintulkart.com
07891 571263

Colour Mixing Oil Paints

30 Sep | 1, 7, & 8 Oct | 11am & 2pm | Free

Discover interesting colour combinations that have developed through my abstract painting investigations.

Preview Late Night Opening

29 Oct | 6-9pm | Free

Booking required

Join me for a special late night opening preview of Open Studios 2023 in my refurbished studio. RSVP.

064 BARRINGTON FARM Artists

Contact:
roar_art@hotmail.com
01692 650707
autumnfestivalofnorfolk.org

Harvest Festival

29 Sep, 2-5pm | 30 Sep, 12-4pm | Free

Booking required

A two day sensory arts festival celebrating rural Harvest traditions. Including exhibitions, performances, workshops, farm tours, food and more! To book: autumnfestivalofnorfolk.org

065 JILL HILL

Contact:
jill.hill@mypostoffice.co.uk
01263 584155

Inspiration for Hand Stitchery

6 & 7 Oct | 11am-4pm
Donations welcome

Drop in workshop for all abilities, learn hand stitches or find inspiration, materials provided. Donations split between costs and NSPCC.

091 ST ETHELDREDA ARTIST STUDIOS

Contact:
itiscleland@gmail.com
07941 016607

The Model in the Graveyard

8 Oct 11am-3pm | Free

Come and draw our model for free in St Etheldreda's atmospheric graveyard (inside if wet). Some materials provided. All welcome.

094 LOUISE EMILY

Contact:
hello@louiseemily.com
07881 917064

The Art of Style (brunch)

24 Sep | 9.45-11.30am | £35

Booking required

Discover how to express your personal style through your clothing with insights from artist, Louise Emily and stylist, Amy Wheeler.

hello@louiseemily.com

The Art of Style (coffee morning)

27 Sep | 9.15-11am | £25

Booking required

A morning of art and fashion with artist talk from artist Louise Emily and styling tips from stylist, Amy Wheeler.

Art After Dark

23 Sep | 6-10pm | £15

Booking required

Enjoy drinks and nibbles with like-minded people surrounded by art in the heart of the city, hosted by artist, Louise Emily.

126 SUSAN RUDLING

Contact:
fibreartist74@gmail.com
07585 775469

Eco-Printing

26 Sep | 10am-2pm | £55

Booking required

Eco-printing using plants grown from my own garden to create and explore unique printmaking on fabrics and paper in a fun, engaging and sustainable experience.

Macrame

27 Sep | 1-4pm | £35

Booking required

Spend time learning the different knots and how to plan your project. Make either a wall hanging or plant hanger.

Mindful Stitches

28 Sep | 11am-3pm | £35

Booking required

Spend time learning simple stitches on scrap fabric, layered together and embellish by sewing together to make a book cover.

127 ELISABETH KOZMIAN

Contact:
ekozmian@gmail.com
07769 404718

Colour Paper-cutting the Polish way

1 Oct 2-4pm | £13

Booking required

Elisabeth will show her folk arts items and demonstrate the easy technique. You are invited to create own designs or copy folk ones signs.

Aborigine 'Dreamtime' Stories - In Your Own Pictures!

7 Oct 2-4.30pm | £15

Booking required

Elisabeth will describe ideas of 'Dreamtime journeys' showing examples by Aborigine artists. You are invited to use the abstract symbols to make a colour picture - journey of your 'totem animal'.

134 DESIGNERMAKERS21

Contact:
info@designermakerscio.org.uk
07775 593701

Textiles in Action

7 Oct | 11am-3pm | Free

Experience a variety of textile practices from members and visiting artists at designermakers21 and Corn Hall exhibition. Check website for details.

144 SARA EDWARDS

Contact:
sara@gullmeadow.co.uk
07518 352250

Introduction to Acrylics Workshop

4 Oct | 10am-3pm | £55

Booking required

Learn about materials and techniques while painting a picture of your choice on canvas. All materials provided, all abilities welcome.

Autumn in Acrylics Workshop

7 Oct | 10am-3pm | £55

Booking required

Paint the vibrant colours of the season with a choice of landscape, wildlife or leaves. All materials provided, all abilities welcome.

147 CLARE SPENDER

Contact:
clarespender@gmail.com
07817 823018

Introduction to Creative Mark Making with Stitch and Fabric

27 Sep & 4 Oct | 1-4pm | Free

Max five people, booking required

A selection of fabrics will be provided for you to experiment with using heat press printing techniques and stitching methods. To book email: clarespender@gmail.com

Landscape Stitching

29 Sep & 6 Oct | 1-4pm | Free

Max five people, booking required

This workshop will introduce you to simple printing and stitching techniques to create your own small unique hand stitched landscape.

148 RORY McSHANE

Contact:
r.mcshane@btopenworld.com
07990 856785

Greenhouse 7000 +

26 Sep | 11am-3pm | Free

Booking required

Dig clay from the land and make a small monument to a planted tree.



VISIT OPEN STUDIOS ON YOUR BIKE

You could make a day of it and cycle to a studio. It's also a great way to check out our art trails.

All events listed will be held at the artist's studio unless otherwise stated. Studio addresses can be found in the artist's profile entry within this brochure.

HOW TO USE THIS GUIDE

This guide contains details of all artists, artist groups and schools taking part. Each entry is listed according to which Norfolk district they are in, and then by postcode. They each have a brochure ID number, so you can see where they are located on the maps in this guide.

Simply select which artist or school you want to visit, check when they're open and make your visit. There's no need to book in advance unless you're a large group, and there's no admission charge for any studio.

norfolkstudios.org.uk

All studios are open 10am–5pm unless otherwise stated

CHECK BEFORE YOU VISIT

For the most up-to-date information we strongly advise checking our website before setting out on your visits, or call the artist.

TELL US WHAT YOU THINK

Enjoy your Norfolk Open Studios experience and let us know how you get on by completing our online visitor survey, with a chance to win one of two £100 Jarrold vouchers. See page 55

ART TRAILS

Art Trails offer a unique way to explore the county. We have eight suggested routes from artists, linking studios, local attractions as well as refreshment stops. Trail numbers are shown on the map – symbol **AT** – to indicate the area they cover, and details can be found at the end of each district section. Trail maps will be available at participating studios and the website.

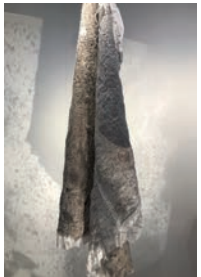
EVENTS & DEMOS

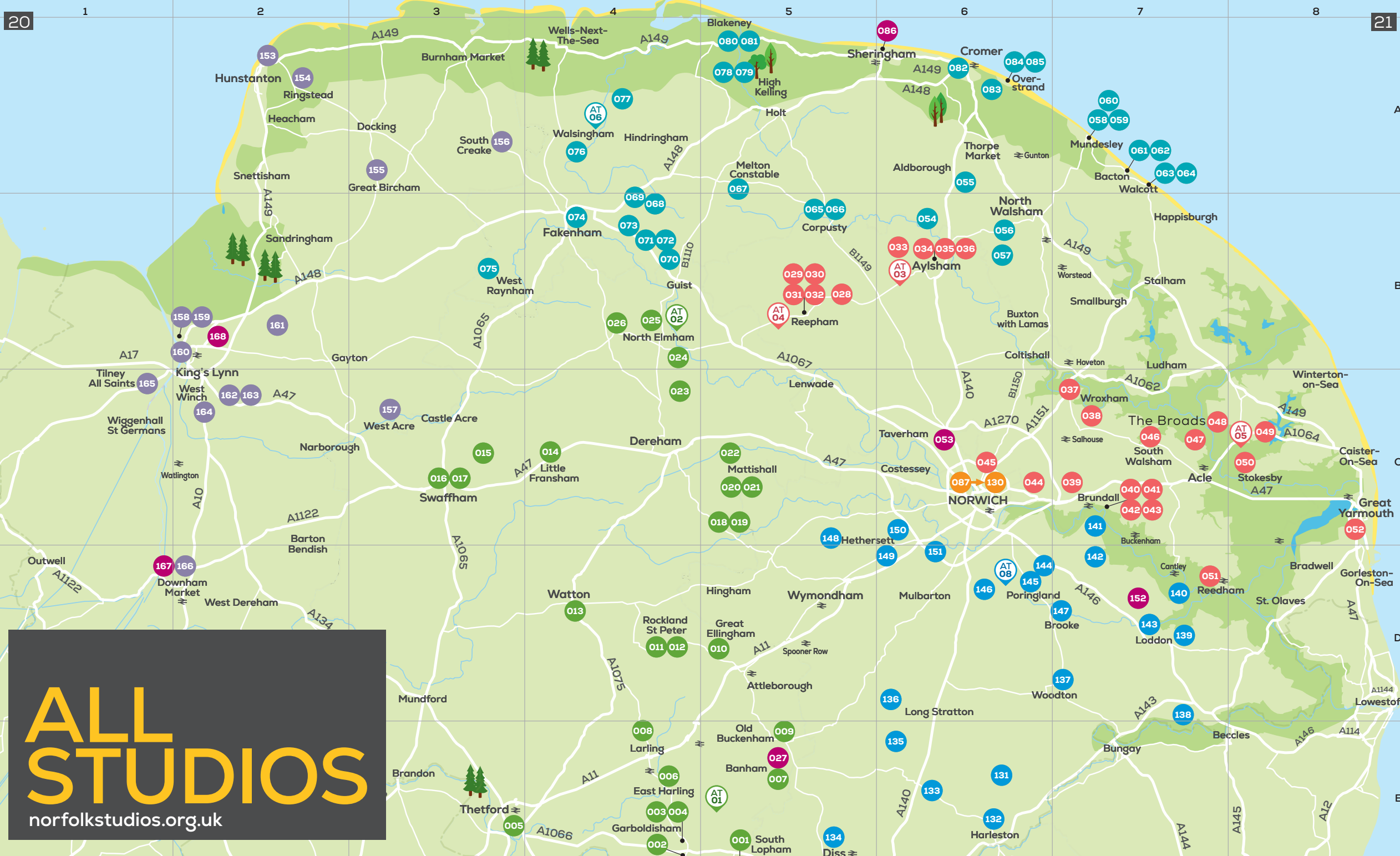
See pages 14–17 for details of the special events and activities being held by artists. Many are free to attend, offering you the chance to get creative and have a go yourself!

KEY TO SYMBOLS

- G** The artist is happy to take group bookings – please phone ahead
 - W** The artist offers workshops and/or private tuition
 - V** Visitors are welcome by appointment throughout the year
 - T** Artist is available for educational/teaching projects
 - C** The artist undertakes commissions
 - E** The artist is running an additional event (see pages 14–17)
 - AT** The artist is part of an Art Trail
 - NEW** New artist 2023
 - Parking space at least 3.6m wide, doors at least 0.75m wide and a level entrance (with no steps greater than 20mm high)
 - Limited, partial or no access for wheelchairs – please phone ahead to discuss access
 - Not accessible to wheelchair users. please phone ahead to discuss possible access
- Further access details can be found on the website in the studio listing. If in any doubt about access, we recommend calling the artist in advance.
- Please remember that as most studios are private and are not usually open to the public it is unlikely you will have access to toilet facilities or wheelchair-accessible toilets.

ARTIST ENTRY

<p>Brochure ID number: each artist has a unique reference number, which appears on the area map provided at the start of each section</p> <p>Artist/Group/School name</p> <p>Description of artist's work</p> <p>Contact details</p> <p>Accessibility information and symbols (see above for key to symbols)</p>	<p>Dates studio is open: dates in bold indicate when the studio is open</p> <p>Map reference: this indicates where to find the studio on the maps within this guide</p>	<div style="border: 1px solid black; padding: 5px;"> <p>147 CLARE SPENDER MAP D7</p> <p>SEP 23 24* 25 26 27 28 29 30 OCT 1 2 3 4 5 6 7 8</p> <p>I am fascinated how thread can change the surface of any material.</p> <p>23 The Street, Brooke, Norwich NR15 1JW</p> <p>07817 823017 clarespender@gmail.com clarespender.com</p> <p>GWVTC E AT08 NEW</p>  </div>
---	---	--



ALL STUDIOS
 norfolkstudios.org.uk

BRECKLAND

Studios open 10am-5pm (unless stated)



001 KEELEY CHAPMAN MAP E5
 SEP 23 24 25 26 27 28 29 30 OCT 1 2 3 4 5 6 7 8

Interpretational ceramic artist.

Fen Farm, Low Common, South Lopham, Diss IP22 2JR
 07734 069895
 k.chapman@chapmansurveyors.co.uk
 keeleychapmanceramics.co.uk
 Instagram: keeleychapmanceramics

ATO1 **NEW**



005 EVERYTHING THETFORD MAP E3
 SEP 23 24 25 26 27 28 29 30 OCT 1 2 3 4 5 6 7 8

Meet the Makers

Annette Morgan, Dan Morgan, Christine Sanderson, Caroline King, Brett Staight, Corinne Fulford

Pop up studio of local makers: award-winning textile artist Annette Morgan. Print maker Dan Morgan. Felting from Christine Sanderson. Vegan and eco-friendly beauty products from Caroline King. Pottery, illustrations and poems from Brett Staight. Jewellery and block printing from Corinne Fulford.

Maker's Cottage, 20 Magdalen Street, Thetford IP24 2BN | 07802 701911 | 01842 751975
 info@leapinghare.org | leapinghare.org

GWVTC

002 PENNY LINDOP MAP E4
 SEP 23 24 25 26 27 28 29 30 OCT 1 2 3 4 5 6 7 8

Fluid, expressive and intuitive in style, using watercolour, ink, acrylic and oils.

The Spinney, The Street, Garboldisham IP22 2QN (please check online for up-to-date address)
 07932 797996
 pennylindopartist@gmail.com
 pennylindopart.co.uk

WV T **ATO1**




003 DEBORAH KEY MAP E4
 SEP 23 24 25 26 27 28 29 30 OCT 1 2 3 4 5 6 7 8

Painter and printmaker creating original, hand painted linocuts inspired by nature.

Carcook House, Back Street, Garboldisham, Diss IP22 2SD
 07715 327781
 bizzkeybee.co.uk

ATO1 **NEW**



006 DEBBIE PLASKETT MAP E4
 SEP 23 24 25 26 27 28 29 30 OCT 1 2 3 4 5 6 7 8

Open 11am-4.30pm
 Other days/times by appointment

Nature-inspired acrylic and mixed media paintings.

The Hidden Garden Studio
 Off Timber Road, East Harling NR16 2PR
 07854 105002 | 01953 718621
 debbie@deborahplaskett.com
 deborahplaskett.com

GVC **ATO1**



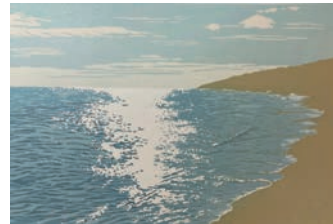
004 GILL THORNTON MAP E4
 SEP 23 24 25 26 27 28 29 30 OCT 1 2 3 4 5 6 7 8

Open 11am-4.30pm

Hand printed, original linocut designs inspired by nature and the landscapes of East Anglia.

The Meadows, The Street, Garboldisham, Diss IP22 2RZ | 07745 687681
 thorntongill@yahoo.co.uk
 gill-thornton.co.uk

WV **ATO1**



007 SYLVIE MANEY MAP E5
 SEP 23 24 25 26 27 28 29 30 OCT 1 2 3 4 5 6 7 8

Open by appointment only

Mixed media and watercolour artist. Varied subject matter includes landscapes and florals.

2 Willow Lane, Banham NR16 2JQ
 07927 452741 | 01953 887494
 sylviemaneyart.co.uk

WV **ATO1** **NEW**



008 JAN SCARLETT MAP E4
 SEP 23 24 25 26 27 28 29 30 OCT 1 2 3 4 5 6 7 8

Open 10.30am-3.30pm
 Explores a multi media approach to the theme of horses.
 Brookside, Watton Road, Larling NR16 2RA
 07789 761873
 jan_scarlett@yahoo.com
GWVTC ATO1 **NEW**



011 MARTIN PIGG MAP D4
 SEP 23 24 25 26 27 28 29 30 OCT 1 2 3 4 5 6 7 8

Wood sculpture for indoors and outdoors.
 Bowers Farm, Bell Road, Rockland St Peter NR17 1UL
 07793 241469 | 07793 241469
 martpigg@hotmail.com
GTC



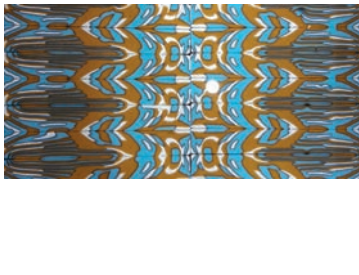
015 LOUISE TIPLADY MAP C3
 SEP 23 24 25 26 27 28 29 30 OCT 1 2 3 4 5 6 7 8

Other times may be available by appointment only
 Unique, tactile carved and letter-cut pieces, predominantly in stone.
 Also linocut lettering and prints.
 3 South Acre Road, Sporle, King's Lynn PE32 2EH
 01760 721948
 mail@louisetipliedy.com
 louisetipliedy.com
GVC



019 MARIE DAWE MAP C5
 SEP 23 24 25 26 27 28 29 30 OCT 1 2 3 4 5 6 7 8

Glass, stained, fused, home and garden art.
 Orchard Farm, Tinkers Lane, Reymerston NR9 4ET
 07901 695534
 Emdawe@aol.com
GWVTC E



009 LYDIA DARRAH MAP E5
 SEP 23 24 25 26 27 28 29 30 OCT 1 2 3 4 5 6 7 8

Inspired by landscape, local and beyond. Working expressively in acrylics, pastel and charcoals.
 The Clowns House, Church Lane, Old Buckenham NR17 1RP
 07900 911793 | 01953 861360
 lydiadarrah@hotmail.co.uk
VC ATO1



012 ADAM JAMES SLATTER MAP D4
 SEP 23 24 25 26 27 28 29 30 OCT 1 2 3 4 5 6 7 8

Inspired by wildlife and storytelling, a collection of animal portraits painted in a variety of media.
 Bowers farm, Bell Road, Rockland St Peter NR17 1UL
 07938 050873
 adamslatter@icloud.com
C



016 MAUREEN BAKER MAP C3
 SEP 23 24 25 26 27 28 29 30 OCT 1 2 3 4 5 6 7 8

Individual, functional stoneware pots for everyday use, made using traditional Oriental glazes in a contemporary manner, sometimes layering one glaze over another using wax resist. There are also pebble planters for the garden.
 40 London Street, Swaffham PE37 7DG
 07516 527939 | 01760 722738
 bakermaureen122@gmail.com
V



020 RUTHANNE TUDBALL MAP C5
 SEP 23 24 25 26 27 28 29 30 OCT 1 2 3 4 5 6 7 8

Stoneware, manipulated and assembled wet. Soda vapour glazed in a wood/gas kiln.
 Temple Barn Pottery, Solomons Temple, Welborne, Dereham NR20 3LD
 01362 858770
 ruthanneatudball@gmail.com
 ruthanneatudball.com
GVC



010 SANDRA ROBERTS MAP D5
 SEP 23 24 25 26 27 28 29 30 OCT 1 2 3 4 5 6 7 8

Evenings by appointment
 Wide variety of paper-crafting, techniques, mixed media, home decor, giftware, 3D projects. Kits also available.
 Sandra's Stamp & Craft Studio, The Old Parsonage, Attleborough Road, Gt. Ellingham NR17 1LG
 07806 616704 | 01953 456583
 studiostampers@btinternet.com
 sandrascraftstudio.com
GWVTC E



013 HEATHER GRAHAM MAP D4
 SEP 23 24 25 26 27 28 29 30 OCT 1 2 3 4 5 6 7 8

Open by appointment on the weekdays of both weeks
 Colourful stoneware pottery for your kitchen and table. Also sturdy plant pots and garden features.
 17 Dereham Rd, Watton IP25 6ER
 07490 499553 | 01953 882572
 hgpots@live.co.uk
GV



017 NIGEL DICKERSON MAP C3
 SEP 23 24 25 26 27 28 29 30 OCT 1 2 3 4 5 6 7 8

Painter of landscape, life-studies, portraits and flowers from life. Studying light, colour in oil paint.
 Old Courthouse, West Acre Road, Swaffham PE37 7NB
 07359 602852 | 01760 723142
 themakersart@yahoo.co.uk
 nigeldickersonartist.wordpress.com
GWVTC **NEW**



021 AMY BREWSTER MAP C5
 SEP 23 24 25 26 27 28 29 30 OCT 1 2 3 4 5 6 7 8

Mixed-media collage art using paint, drawing materials and printed and reused papers.
 Temple Barn Pottery, Solomons Temple, Welborne, Dereham NR20 3LD
 01362 858770
 artbarnamy@gmail.com
WVTC **NEW**



For full directions to each studio, head to our website norfolkstudios.org.uk



014 SUSAN SLANN MAP C4
 SEP 23 24 25 26 27 28 29 30 OCT 1 2 3 4 5 6 7 8

Mid week mornings 10am-12.30pm by appointment
 Multi-layered lino print, inspired by nature.
 Nutmeg Cottage, 2 Spicers Corner Cottages, Little Fransham NR19 2RQ
 07812 389236
 susanslann.com
GWVTC **NEW**



018 CHARLEY DAWE MAP C5
 SEP 23 24 25 26 27 28 29 30 OCT 1 2 3 4 5 6 7 8

Hand dyed yarn and fiber, plus beautiful woolly crafts.
 The Barn, Orchard Farm, Tinkers Lane, Reymerston NR9 4ET
 charley@noodlesoupshop.co.uk
 noodlesoupshop.co.uk
C



It's a mini adventure... you don't know what will be revealed at your destination.
 Visitor 2022

022 ZELDA EADY MAP C5
SEP 23 24 25 26 27 28 29 30 OCT 1 2 3 4 5 6 7 8

Exciting variety of contemporary original linocut prints plus landscape paintings full of colour and rhythm.

Jacob's Island Howes Lane, Mattishall NR20 3PB
01362 858078
zeldaeady.co.uk



023 JAYNE BUNTING MAP C4
SEP 23 24 25 26 27 28 29 30 OCT 1 2 3 4 5 6 7 8

All things bright and beautiful, all creatures great and small. Ceramic sculpture and mixed media paintings.

Art and Clay, Hoe Road East, Swanton Morley, Dereham NR20 4PZ
07717 666151 | 01362 637517
info@artandclay.co.uk
jaynebuntingceramics.com
artandclay.co.uk



024 JENNI THORNELEY MAP B4
SEP 23 24 25 26 27 28 29 30 OCT 1 2 3 4 5 6 7 8

Colourful acrylic paintings, inspired by the world around us. Beautiful painted pebbles.

Old Stables, Swanton Morley Road, Worthing, Dereham NR20 5HS
07514 332966 | 01362 668804



025 TOBY WINTERBOURN MAP B4
SEP 23 24 25 26 27 28 29 30 OCT 1 2 3 4 5 6 7 8

Metalwork for the home and garden, inspired by plants and animals.

Park House Farmyard, High Street, North Elmham, Dereham NR20 5JY
07954 639720 | 01362 667146
tobywinterbourn@hotmail.co.uk
tobywinterbourn.co.uk



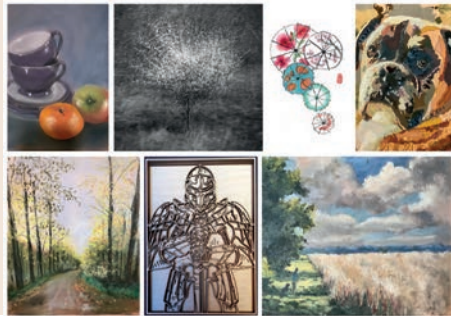
026 ST BARTS, BRISLEY MAP B4
SEP 23 24 25 26 27 28 29 30 OCT 1 2 3 4 5 6 7 8

Open 10am-5pm

Muriel Ball, Sarah Burton, Dick Dykes, Hugh Fawcett, Julia Fawcett, Victoria Hall, Pat Jones, Peter Jonathan Kennedy, Colin Murden, Cynthia Pate, Joanna Smith, Gill Savory, Maxine Tarsey

A diverse exhibition of oils, watercolours, pastels, photography, textiles and sculpture, displayed within the splendid medieval interior of St Bartholomew's Church, Brisley. Part of a wider Creative Arts Festival at St Barts, celebrating the creative arts and our community.

St Bartholomew's Church, Church Street, Brisley, Dereham NR20 5AA
07967 664690 | katie.longwill@gmail.com



027 ACORN PARK School MAP E5
SEP 23 24 25 26 27 28 29 30 OCT 1 2 3 4 5 6 7 8

Open 3.30pm-7pm

"Views from a different lens!"

Andrew's Furlong, Banham, Norwich NR16 2HU
07503 935769 | 01953 888656
paula.rei@acornparkschool.org.uk
acornpark.org.uk



I felt inspired by the people I spoke to and part of a community.

Visitor 2022

Breckland Art Trails

Art Trail



SOUTH BRECKLAND ARTISTS
Art Trail

EAST HARLING, GARBOLDISHAM, SOUTH LOPHAM, BANHAM, OLD BUCKENHAM, LARLING

Open:

Weekends 11am-4.30pm and other times/dates (see each artist's Open Studio dates)

Featuring:

Keeley Chapman (001), Lydia Darrah (009), Deborah Key (003), Penny Lindop (002), Sylvie Maney (007), Debbie Plaskett (006), Jan Scarlett (008) and Gill Thornton (004)

Come and meet our group of eight artists based in South Breckland villages, working in a variety of disciplines including painting, printmaking, ceramics and textiles. Light refreshments at some venues, plus some excellent cafes and pubs on the route.

Contact:

Debbie Plaskett | 01953 718621 | 07854 105002
debbie@deborahplaskett.com

@southbrecklandarttrail | southbrecklandart.trail



NORTH BRECKLAND AND BEYOND
Art Trail

SWANTON MORLEY, WORTHING, BRISLEY, NORTH ELMHAM AND STIBBARD

Open:

See each artist's Open Studio dates

Featuring:

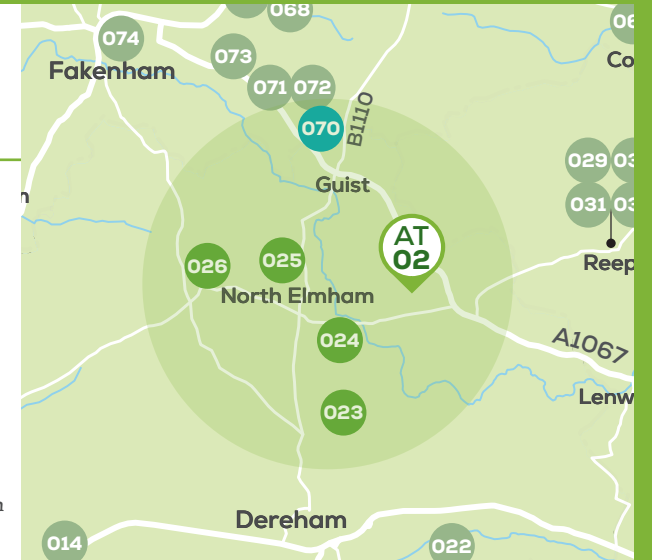
St Barts Brisley (group) (026), Jayne Bunting (023), Jenni Thorneley (024), Toby Winterbourn (025) and David Yaxley (070)

A tour around Swanton Morley, Worthing, Brisley, North Elmham and Stibbard. There will be refreshments and light bites available at St Barts Church in Brisley over the second two weekends, along with other events as part of the Creative Arts at St Barts festival.

Contact:

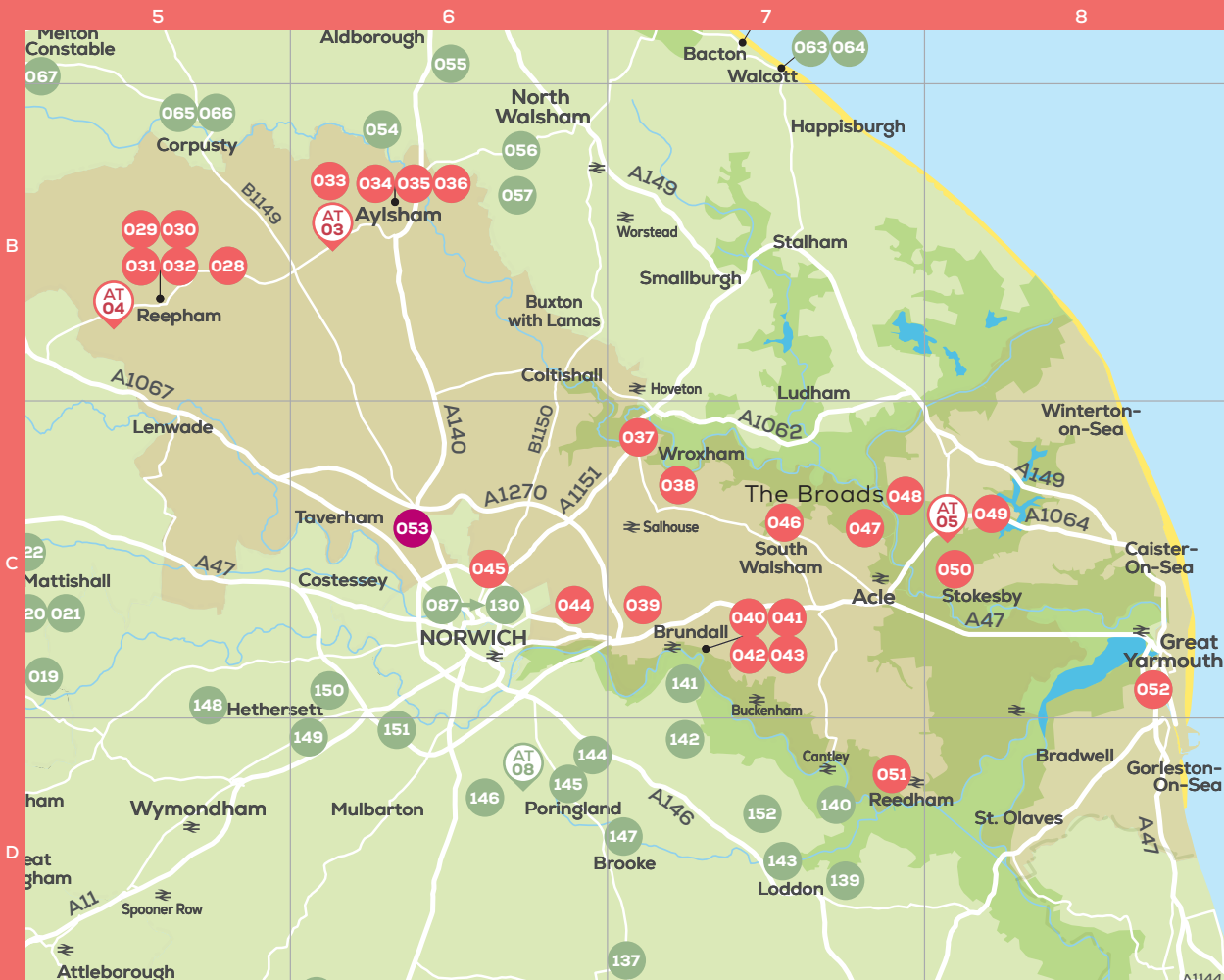
Katie Longwill | 07967 664690 | katie.longwill@gmail.com

@creative_arts_st_barts | brisleystbarts



BROADLAND & GREAT YARMOUTH

Studios open 10am-5pm (unless stated)



028 KATE BREWSTER MAP B5
SEP 23 24 25 26 27 28 29 30 OCT 1 2 3 4 5 6 7 8

Open weekdays 9am-12pm and 2.30-4pm, weekends 10am-4pm
Using clay and watercolour paint and pen I create artwork of nature and abstract forms.
Keepers Cottage, 2 Commonsides Cottages, Salle, Near Reepham NR10 4EP | 07917 864741
kateb5188@gmail.com
etsy.com/uk/shop/KatesceramicsShop



TC ATO4 &

029 SARAH BAYS MAP B5
SEP 23 24 25 26 27 28 29 30 OCT 1 2 3 4 5 6 7 8

Printmaker producing work using various techniques inspired by the Norfolk countryside, wildlife and coast.
The Old Stores, The Moor, Reepham NR10 4NL
01603 870640
sbays205@gmail.com
sarahbays.co.uk
ATO4 &



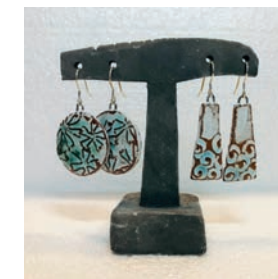
030 ALISON VARLEY MAP B5
SEP 23 24 25 26 27 28 29 30 OCT 1 2 3 4 5 6 7 8

Jewellery. Individually designed pieces in silver and gold with particular emphasis on line and contrasting textures.
The Old Stores, The Moor, Reepham NR10 4NL
07751 019200 | 01603 871645
Info@alisonvarleyjewellery.co.uk
alisonvarleyjewellery.co.uk
VGC ATO4 &



031 JANE BYGRAVE MAP B5
SEP 23 24 25 26 27 28 29 30 OCT 1 2 3 4 5 6 7 8

A range of decorative, sculptural and functional ceramics with new work in 2023.
Jane Bygrave Studio Ceramics, The Old Stores, The Moor, Reepham NR10 4NL
07464 622240 | 01603 870640
janebygrave@gmail.com
janebygraveceramics.co.uk
ATO4 &



032 THROUGH THE GREEN DOOR MAP B5
SEP 23 24 25 26 27 28 29 30 OCT 1 2 3 4 5 6 7 8

Sue Johnston, Emily Longhurst, Simon Tebbutt, Gloria Davis, Kate Johnston, Bee Johnston
An adventurous and imaginative collection of work by six diverse artists. Unique designs inspired by the natural environment. Textiles, ceramics, paintings, jewellery, wood craft, and metal work. Inside and in pretty cottage garden. No entry from Station Rd, access via Fishers Alley/Market Place or Chapel Walk/Station Rd car park.
Hill House Cottage, 10 Station Road, Reepham NR104LF
07776 125743 | 01603 879639
ATO4 &



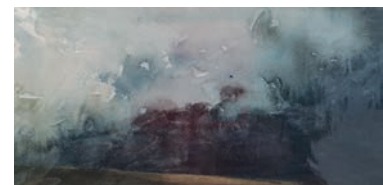
033 JOHN ANDERSON MAP B6
SEP 23 24 25 26 27 28 29 30 OCT 1 2 3 4 5 6 7 8

Drawings and paintings that tell of close encounters of the elemental kind.
22 Silvergate, Blickling, Norwich NR11 6NN
01263 731333
V &



034 MARY NEWTON MAP B6
SEP 23 24 25 26 27 28 29 30 OCT 1 2 3 4 5 6 7 8

Landscape, seascape, skies, weather, portraits, flowers. Atmosphere and colour in oil, watercolour, pastel, prints, and cards.
Conservatory Studio, 11 Town Lane, Aylsham NR11 6HH
07789 358704 | 01263 731463
GWVC ATO3 &




035 PHILIP DE PAOLO MAP B6
 SEP 23 24 25 26 27 28 29 30 OCT 1 2 3 4 5 6 7 8

Furniture, wood turning and carving using a range of woods and other materials.

3 Sir Williams Lane, Aylsham NR11 6AW
 07467 234546

GVC AT03 ♿



039 DIANA NG MAP C7
 SEP 23 24 25 26 27 28 29 30 OCT 1 2 3 4 5 6 7 8

Alchemy of Chinese tradition and European design ceramics.

Ng Pottery, Smea Lane, Great Plumstead NR13 5AX
 07516 503016
 ngpottery.com

GWVTC E ♿




043 FIRED ROSE JEWELLERY MAP C7
 SEP 23 24 25 26 27 28 29 30 OCT 1 2 3 4 5 6 7 8

Gold and silver jewellery designer, creating storytelling pieces inspired by life's lessons and adventures.

Deacon House, 22 Blofield Road, Brundall NR13 5NN
 01603 670716
 firedrose.co.uk

GWTC ♿ **NEW**



047 CORRIN TULK MAP C7
 SEP 23 24 25 26 27 28 29 30 OCT 1 2 3 4 5 6 7 8

Open 11am-4pm

Vibrant seascape oil paintings, watercolour sketchbooks, pen and ink drawings, cards.

Cherry Tree Cottage, 10 Marsh Road, Upton NR13 6BS
 07891 571263 | 01493 751906
 corrin@corrintulkart.com
 corrintulkart.com

GWVC E ♿



036 VIVIENNE HEAD MAP B6
 SEP 23 24 25 26 27 28 29 30 OCT 1 2 3 4 5 6 7 8

Designer-made jewellery in silver and gold, inspired by the natural world.

100 Hungate Street, Aylsham NR11 6EA
 07769 677330
 viviennehead@viviennehead.co.uk
 viviennehead.co.uk

V AT03 ♿




040 JULIE BOLUS MAP C7
 SEP 23 24 25 26 27 28 29 30 OCT 1 2 3 4 5 6 7 8

Expressive style paintings, sketches, collages capturing a sense of place connecting to my immediate surroundings and places travelled.

Broom Boat, Brundall NR13 5PW
 07979 648793
 juliebolus.com

VTC ♿



044 HELEN HARRISON MAP C6
 SEP 23 24 25 26 27 28 29 30 OCT 1 2 3 4 5 6 7 8

A colourful combination of watercolour and acrylic work celebrating the changing seasons.

Spinney Studio, 35 Spinney Road, Thorpe St Andrew, Norwich NR7 0PL
 07708 720072 | 01603 291867
 spinneystudio.com

WVC E ♿



048 MICHELLE DANIELS MAP C7
 SEP 23 24 25 26 27 28 29 30 OCT 1 2 3 4 5 6 7 8

Open at other times by appointment

Raku fired vessels inspired by images from space and hand thrown functional stoneware.

2 Harrison's Farm, Oby NR29 3BW
 01493 369317
 michelledanielspotter@gmail.com
 obypottery.co.uk

GVC AT05 ♿



037 CHRISTOBEL DOBSON MAP C7
 SEP 23 24 25 26 27 28 29 30 OCT 1 2 3 4 5 6 7 8

10am-4pm

Bespoke unique patchwork throws and bunting made from new and vintage fabrics.

26 Keys Drive, Wroxham NR12 8SS
 07947 806477
 christobelpatchwork@gmail.com
 christobelpatchwork.co.uk

VTC ♿



041 BOB HEATH MAP C7
 SEP 23 24 25 26 27 28 29 30 OCT 1 2 3 4 5 6 7 8

Framed and mounted artworks of photographs and found objects. Sculptures for the garden in wood and metal, including dragonflies and crickets.

36 St Laurence Avenue, Brundall NR13 5QH
 01603 716295
 robertheath83@gmail.com

C ♿




045 DUNCAN GRANT MAP C6
 SEP 23 24 25 26 27 28 29 30 OCT 1 2 3 4 5 6 7 8

Painter, illustrator and printer.

278 Constitution Hill, Norwich NR6 7RD
 07986 533727
 duncangrantartist.com

GWVTC ♿



049 STEPH EVANS-JONES MAP C8
 SEP 23 24 25 26 27 28 29 30 OCT 1 2 3 4 5 6 7 8

Jewellery maker and silversmith working with silver, copper, glass and semi-precious beads.

The Old Parsonage, Ruggs Lane, Fleggburgh, Great Yarmouth NR29 3DH
 07772 592685 | 01493 369148
 sevansjones@aol.com
 CFTCjewellery.etsy.com

GVC AT05 ♿ **NEW**



038 PAT SOUTHWOOD MAP C7
 SEP 23 24 25 26 27 28 29 30 OCT 1 2 3 4 5 6 7 8

Thrown and hand-built ceramics for the home. Quietly decorative abstractions using black clay and a variety of slips. Photos shot on trips to Japan provided stunning source material.

Cosseys Yard, Lower Street, Salhouse NR13 6RX
 07704 848610
 patsouthwood@hotmail.co.uk
 patsouthwood.co.uk

GWVTC ♿



042 JACKY HEATH MAP C7
 SEP 23 24 25 26 27 28 29 30 OCT 1 2 3 4 5 6 7 8

Recycled ephemera in repurposed boxes, clocks, books. Hand bound "junk" journals, folders. "Eco" dyed papers.

36 St Laurence Avenue, Brundall NR13 5QH
 01603 716295
 jackyheath1@gmail.com

C ♿



046 PAUL COOPER MAP C7
 SEP 23 24 25 26 27 28 29 30 OCT 1 2 3 4 5 6 7 8

Large selection of prints and paintings varying between traditional and abstract.

Walnut Dell, 19 Church Close, South Walsham NR13 6DW
 01603 270495
 paulanthonycooper@gmail.com

GV ♿




050 SUZANNE CHISNELL MAP C8
 SEP 23 24 25 26 27 28 29 30 OCT 1 2 3 4 5 6 7 8

Landscape and marine artist, working in oil and pastel, abstracting and reduction, marks with meaning.

Marsh Studio, One High House, Mill Road, Stokesby NR29 3EY
 07599 923002
 suzannechisnell@gmail.com
 suzannechisnell.co.uk

GWVTC AT05 ♿



051 DEBORAH LARNE MAP D7
 SEP 23 24 25 26 27 28 29 30 OCT 1 2 3 4 5 6 7 8

Open 11am-4pm
 Encaustic/oil paintings.
 Landscape and abstract.
 Variety of sizes.

Langley Cottage,
 11 The Hills, Reedham,
 Norwich NR13 3TN
 07801 191130 | 01493 243909
 deborahlarne@me.com
 deborahlarne-artist.co.uk

GVTC ♿



052 GARY HOGBEN MAP C8
 SEP 23 24 25 26 27 28 29 30 OCT 1 2 3 4 5 6 7 8

Artist now mainly creating collage work in British stamps.

35 Deneside,
 Great Yarmouth NR30 3AX
 07733 337704
 cocksoupart@gmail.com
 cocksoupart.co.uk

GVTC ♿



For full directions to each studio, head to our website norfolkstudios.org.uk



053 FIRSIDE Junior School MAP C6
 SEP 23 24 25 26 27 28 29 30 OCT 1 2 3 4 5 6 7 8

Open 10am-12pm and 2-3pm

Our whole school exhibition focuses on helping reducing carbon emissions and our impact on the planet, creating recycled art to show how every little action adds up to a lot.

Middleton's Lane, Hellesdon,
 Norwich NR6 5NF
 01603 426550

♿



Broadland & Great Yarmouth Art Trails

AT 03

AYLSHAM AND VILLAGES Art Trail

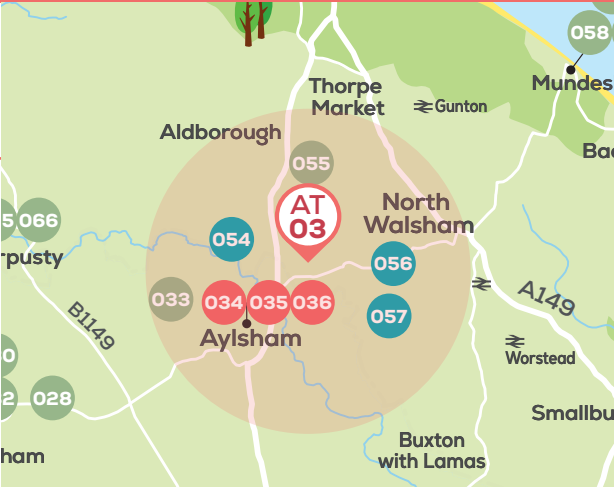
MARKET TOWN OF AYLSHAM AND THE VILLAGES CLOSE BY

Open:
 See each artist's Open studio dates

Featuring:
 Vivienne Head (036), Jo Hillam (054), Michael Horn (056), Mary Newton (034), Philip De Paolo (035) and Michael Scott (057)

Start this trail in Aylsham or one of the villages to experience painting, jewellery, metalwork and wood carving. Stop for a bite in Aylsham at Bread Source, Biddy's or one of the new pizza or wine bars.

Contact:
 Michael Scott | 01692 538494 | michaeldor@hotmail.com



Broadland & Great Yarmouth Art Trails

AT 04

REEPHAM Art Trail

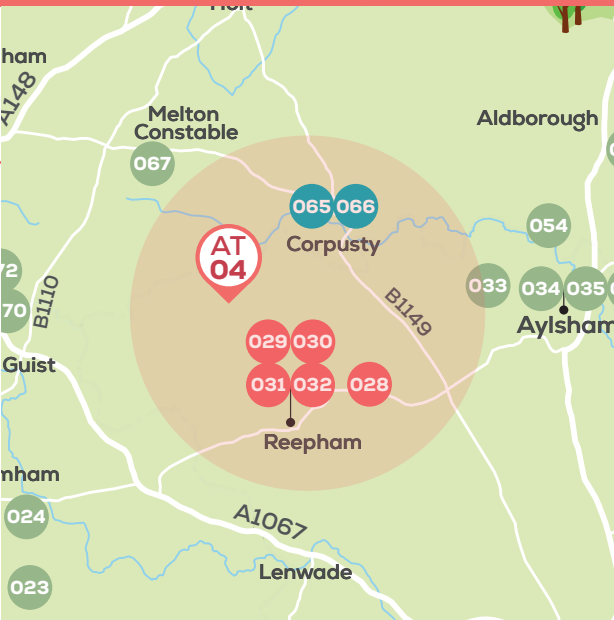
REEPHAM, CORPUSTY AND SALLE

Open:
 See each artist's Open Studio dates

Featuring:
 Sarah Bays (029), Kate Brewster (028), Jane Bygrave (031), Barry Fry (066), Jill Hill (065), Through The Green Door Group (032 - Sue Johnston, Bee Johnston, Kate Johnston, Gloria Davis, Emily Longhurst and Simon Tebbutt) and Alison Varley (030)

Four venues in and around the historic market town of Reepham with twelve artists displaying a wide range of work.

Contact:
 Jane Bygrave | 01603 870640
 janebygrave@gmail.com
 Reepham Open Studios Trail



AT 05

THE BLUE MARINE Art Trail

EAST NORFOLK, WITHIN A FEW MILES OF THE TRINITY BROADS

Open:
 See each artist's Open Studio dates

Featuring:
 Suzanne Chisnell (050), Michelle Daniels (048) and Steph Evans-Jones (049)

The Blue Marine art trail explores the studios of three artists working within a few miles of the Trinity Broads. A silversmith, potter and painter, all creating works inspired by the infinite variety of blues found in the natural world all around them.

Contact:
 Suzanne Chisnell | 07599 923002
 su@suzannechisnell.co.uk



NORTH NORFOLK

Studios open 10am–5pm (unless stated)



054 JO HILLAM MAP B6
 SEP 23 24 25 26 27 28 29 30 OCT 1 2 3 4 5 6 7 8

Other times by appointment
 Oil paintings – land and seascapes, still life, abstract. Classical and contemporary
 4 Cromer Road, Ingworth (near Aylsham), Norwich NR11 6PJ
 07881 595554 | 01263 732325
AT03



055 ANDREW KING ROI IEA EAGMA MAP A6
 SEP 23 24 25 26 27 28 29 30 OCT 1 2 3 4 5 6 7 8

East Anglian landscapes and coastal subjects, painted freely in oils and often on location.
 Pond Cottage, Long Lane, Colby NR11 7EF
 01263 761737
 info@andrewkingroi.co.uk andrewkingroi.co.uk
GV



056 MICHAEL HORN MAP B6
 SEP 23 24 25 26 27 28 29 30 OCT 1 2 3 4 5 6 7 8

Mostly abstract work in various media. Large and small.
 The Forge House, Church Road, Felmingham NR28 0LQ
 01692 403368
 michaelhornstudio@gmail.com
GVV AT03 **NEW**



057 MICHAEL SCOTT MAP B6
 SEP 23 24 25 26 27 28 29 30 OCT 1 2 3 4 5 6 7 8

A variety of oil paintings from traditional still life to modern landscapes.
 The Coach House, Common Road, Skeyton NR10 5FD
 07970 062511
 michaeldorf@hotmail.com
GV C AT03 **NEW**



058 ALWYN CRAWSHAW MAP A7
SEP 23 24 25 26 27 28 29 30 OCT 1 2 3 4 5 6 7 8

Watercolour, oil, most subjects including Norfolk landscapes – representational style. Sizes from 6” x 8” to 24” x 36”.



21 Beckmeadow Way, Mundesley NR11 8LP 01263 720656

CC ♿

059 JUNE CRAWSHAW MAP A7
SEP 23 24 25 26 27 28 29 30 OCT 1 2 3 4 5 6 7 8

Watercolour, oil, acrylic – most subjects representational and fantasy. Sizes up to 15” x 20”.



21 Beckmeadow Way, Mundesley NR11 8LP 01263 720656

CC ♿

060 MICHELLE LILLIE MAP A7
SEP 23 24 25 26 27 28 29 30 OCT 1 2 3 4 5 6 7 8

Abstracted Landscapes in oil and cold wax.

3 Beck Close, Mundesley NR11 8QL 07747 633932 michellelillieart.co.uk

CC NEW



061 JO ARNOLD MAP A7
SEP 23 24 25 26 27 28 29 30 OCT 1 2 3 4 5 6 7 8

Ceramic sculpture on myths, migration and new work on related themes. Plus bowls, mugs and jugs. Entrance in Sandy Lane, opposite the church.

Bacton House, Church Road, Bacton NR12 0JT 01692 652205 joanna.arnold@btinternet.com joarnoldceramicsetc.co.uk

GVC ♿



062 MAGGIE SIMMONS MAP A7
SEP 23 24 25 26 27 28 29 30 OCT 1 2 3 4 5 6 7 8

Mix of contemporary landscape, seascape and abstract paintings in oils, acrylics, charcoal and inks plus prints and cards. Entrance in Sandy Lane, opposite the church.

Bacton House, Church Road, Bacton NR12 0JT 07810 526498 maggie.simmons.2008@gmail.com | bactontrail.co.uk



WT ♿

063 AMELIA MILLS MAP A7
SEP 23 24 25 26 27 28 29 30 OCT 1 2 3 4 5 6 7 8

Abstract resin paintings with a glass-like finish, inspired by oceans and aerial landscapes. Wildlife linoprints and illustrations also available.

2 Manor Farm Cottage, Coast Road, Walcott NR12 0NG | 07557 657232 amelia.mills@gmail.com ameliamills.com

GVC ♿



064 BARRINGTON FARM MAP A7
SEP 23 24 25 26 27 28 29 30 OCT 1 2 3 4 5 6 7 8

Michael Smith, James Gladwell, Saffron Wright, Chris Angell, Hazel Mavin and more

The Barrington Farm Art Barn is a supported studio where a vibrant and diverse community of 20 self taught artists meet weekdays to develop their art practice. Disciplines include drawing, painting, printmaking, textiles, sculpture and ceramics. All welcome!

Barrington Farm, Rookery Farm Rd, Walcott NR12 0PF 07913 282974 01692 650707

roar_art@hotmail.com

GVT E ♿



065 JILL HILL MAP B5
SEP 23 24 25 26 27 28 29 30 OCT 1 2 3 4 5 6 7 8

Hand dyed, embroidered, garments, accessories, samplers, fabrics, threads. Showing with Barry Fry.

The Old Workshop Gallery, The Street, Corpusty NR11 6QP 01263 584155 corpustygalleries.co.uk

VG E ATO4 ♿



066 BARRY FRY MAP B5
SEP 23 24 25 26 27 28 29 30 OCT 1 2 3 4 5 6 7 8

Artist, photographer, publisher. Abstract, contemporary, vivid, fluid, random. Showing with the textile artistry of Jill Hill.

The Old Workshop Gallery, The Street, Corpusty NR11 6QP 07780 098138 | 01263 584155 fry.abstract@gmail.com | forallandnone.com

C ATO4 ♿



067 LYN MAY MAP A5
SEP 23 24 25 26 27 28 29 30 OCT 1 2 3 4 5 6 7 8

Wood engravings and linocut prints.

11 Melton Street, Melton Constable NR24 2DB 07931 571079 lynmay68@gmail.com lynmay.co.uk

VG ♿ NEW



068 MARTIN WESS MAP B4
SEP 23 24 25 26 27 28 29 30 OCT 1 2 3 4 5 6 7 8

A perspective on landscape and the human form.

21 Croxton Road, Croxton NR21 0NP 07939 020661 | 01328 822044 martinwess3@gmail.com

G ♿



069 GILL BAGULEY MAP B4
SEP 23 24 25 26 27 28 29 30 OCT 1 2 3 4 5 6 7 8

Vibrant semi-abstracts using acrylic ink and paint. Variety of subject matter, animals, landscapes, dancers. Cards available.

The Spring House, 110 The Street, Kettlestone NR21 0AU 01328 822031 gill.baguley@gmail.com

V ATO6 ♿



070 DAVID YAXELY MAP B4
SEP 23 24 25 26 27 28 29 30 OCT 1 2 3 4 5 6 7 8

Watercolours and drawings of Norfolk landscapes, buildings and ruins. Some prints and cards.

Ordnance Farm House, Guist Bottom, Dereham NR20 5PF 01328 829207 larks.press@xlnmail.com

GV ATO2 ♿



071 ANNIE TEMPEST MAP B4
SEP 23 24 25 26 27 28 29 30 OCT 1 2 3 4 5 6 7 8

Visit tottering.com for the cartoons which appear weekly in Country Life Magazine. Prints and originals. annietempest.com is for sculpture and paintings.

Tylers Barn, Wood Norton Road, Stibbard NR21 0EX 07767 797629 annietempest@hotmail.co.uk annietempest.com tottering.com

GWVT ♿



072 NORFLK MAKRS MAP B4
SEP 23 24 25 26 27 28 29 30 OCT 1 2 3 4 5 6 7 8

We are an artisan maker, at our Norfolk studio and workshop. A maker of quilts, bags, scarves, belts, small leather goods and textiles.

Walnut house, Fulmoston Rd, Stibbard NR21 0LT 01328 829774 stephen.norfolkmakr@gmail.com norfolkmakrs.co.uk

GWVTC ♿



073 STEPHEN PARRY MAP B4
SEP 23 24 25 26 27 28 29 30 OCT 1 2 3 4 5 6 7 8

Wood-fired, ash glazed pots using stoneware and porcelain clays.

Ryburgh Pottery,
1 May Green, Little Ryburgh,
Fakenham NR21 0LP
07748 122414 | 01328 829543
sparry1650@gmail.com
spwoodfiredceramics.co.uk



076 TRACEY ROSS MAP A4
SEP 23 24 25 26 27 28 29 30 OCT 1 2 3 4 5 6 7 8

Capturing the beauty of the North Norfolk coast. Atmospheric seascapes, prints, cards and workshops.

122 Fakenham Road
Houghton St Giles,
Walsingham NR22 6AQ
07786 401396
traceyrossart@gmail.com
tracey-rossart.co.uk



080 MILLY WELBY MAP A5
SEP 23 24 25 26 27 28 29 30 OCT 1 2 3 4 5 6 7 8

Hand built ceramics using coil and slab methods, exploring surface colour and texture throughout pit firing and oxides.

Sun Beams, The Street,
Cley-Next-The-Sea NR25 7RN
07972 798223
millicenza@gmail.com



083 ROBERT DOWNIE MAP A6
SEP 23 24 25 26 27 28 29 30 OCT 1 2 3 4 5 6 7 8

Bold colours and dynamic lines capturing the magic and beauty of Norfolk's coast and countryside.

Woodland House, Nut Lane,
Northrepps NR27 0JY
07857 700659
info@robertdowniefineart.com
robertdowniefineart.com



074 NICHOLAS ELLIOTT MAP B4
SEP 23 24 25 26 27 28 29 30 OCT 1 2 3 4 5 6 7 8

Dynamic still life and contemporary floral oil paintings and delightful pen and wash drawings.

Holly Tree Cottage,
21 Sculthorpe Road,
Fakenham NR21 9HA
07914 778836
nicholas@nicholaselliott.co.uk
nicholaselliott.co.uk



077 KAT WHEELER MAP A4
SEP 23 24 25 26 27 28 29 30 OCT 1 2 3 4 5 6 7 8

I create small batches of hand thrown, high fired, predominantly functional stoneware.

Meadow House, Blakeney Road,
Hindringham NR21 0BU
07748 114461
katwheeler@me.com
katwheelerceramics.com



081 AVERIL COOPER MAP A5
SEP 23 24 25 26 27 28 29 30 OCT 1 2 3 4 5 6 7 8

Working with free sculptural forms and hand formed / thrown works exploring colour and texture.

Sunbeams, The Street,
Cley-Next-The-Sea NR25 7RW
07957 206088
averilcooper@gmail.com



084 DIANE SILSBY MAP A6
SEP 23 24 25 26 27 28 29 30 OCT 1 2 3 4 5 6 7 8

Thrown ware, functional and decorative. Sculptures of animals and birds, hand built ceramics.

5 Tolls View,
Overstrand NR27 0PZ
077860 60826 | 07786 060826
dianeburton@btinternet.com
dianemarieceramics.co.uk



075 MARI FRENCH MAP B3
SEP 23 24 25 26 27 28 29 30 OCT 1 2 3 4 5 6 7 8

Open 10am-4pm (ring if you need to visit later)

New Studio! Abstract mixed media artworks, full of movement and atmosphere. Cards, sketchbooks, studio sale.

Suite A, Building 7, Blenheim Way,
West Raynham Business Park,
Fakenham NR21 7PL
07990 963288
art@marifrench.com
marifrench.com



078 ANTONIA CLARE MAP A5
SEP 23 24 25 26 27 28 29 30 OCT 1 2 3 4 5 6 7 8

Colourful expressionist still life, seascapes and abstract paintings. Prints, cards, sketchbooks and workshops.

Little Leaf Studio, Unit 8,
Manor Farm Barns,
Glandford NR25 7JP
07585 425465
antoniacclare@aol.com
antonia-clare.com



082 GARDEN HOUSE ARTISTS MAP A6
SEP 23 24 25 26 27 28 29 30 OCT 1 2 3 4 5 6 7 8

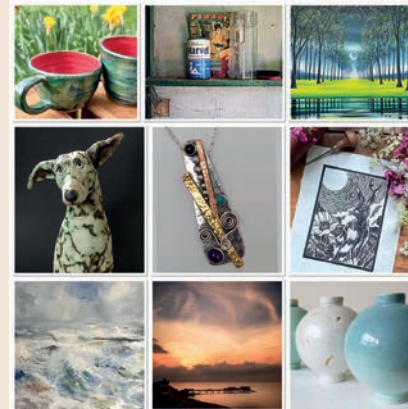
Open Mon-Saturday 10am-5pm, Sun 11am-4pm

Jane Bond, Maureen Cherry, Kate Gale,
Fiona Johnson, Hazel Millington, David Morris,
Keith Nash, Lyn Ravenhill, Samuel Thomas

An eclectic mix of painting, photography, fused glass, jewellery and ceramics. This diverse group of artists create work mainly, but not exclusively, themed around the coastline, marshes and woodland of North Norfolk and it's ever changing landscape.

The Garden House,
31 Garden Street,
Cromer NR27 9HN
07484 137045
01263 511234

gardenhouse
gallery.co.uk
GWVC and wheelchair icons



085 JOY COLE MAP A6
SEP 23 24 25 26 27 28 29 30 OCT 1 2 3 4 5 6 7 8

Paintings in bright acrylics, and watercolours inspired by the beautiful North Norfolk coast and countryside.

1 White Horse Gardens,
Overstrand NR27 0PX
07813 801976 | 01263 576559
joycole.com



079 GUY ALLEN MAP A5
SEP 23 24 25 26 27 28 29 30 OCT 1 2 3 4 5 6 7 8

Open 11am-5pm

Experimental printmaker, who hopes to bring a contemporary twist to the historic art of etching.

Guy Allen Studio & Gallery,
Unit 10, Manor Farm Barns,
Glandford, Near Holt NR25 7JP
01263 741948
guyallenstudio.com



For full directions to each studio, head to our website norfolkstudios.org.uk

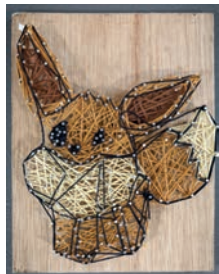


086 SHERINGHAM WOODFIELDS School MAP A6
SEP 23 24 25 26 27 28 29 30 OCT 1 2 3 4 5 6 7 8

Open 9.30am-2.30pm

Pupils and staff have collaborated to create a collection of artwork, showcasing our enjoyment and expertise in a range of approaches such as sculpture, drawing and collage.

Holt Road, Sheringham NR26 8ND
01263 820520
jmillin9ar2@nsix.org.uk



North Norfolk Art Trail

Art Trail

AT 06

NORTH NORFOLK ARTISTS Art Trail

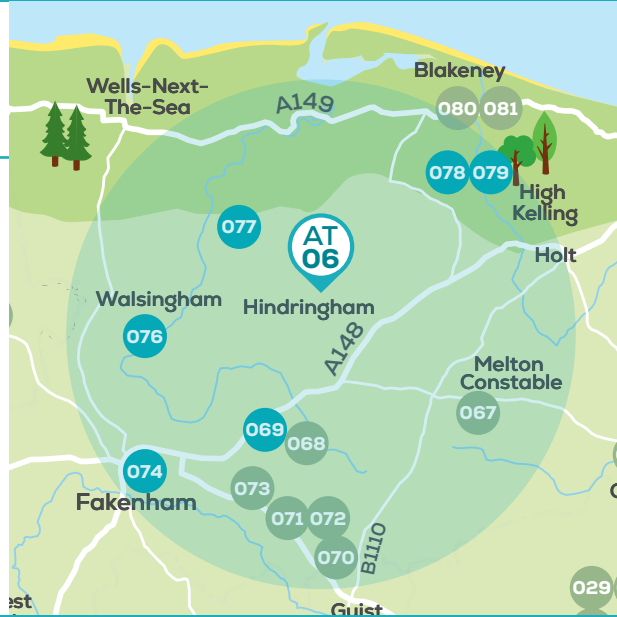
GLANDFORD, HINDRINGHAM, WALSINGHAM AND FAKENHAM

Open:
See each artist's Open Studio dates

Featuring:
Guy Allen (079), Gill Baguley (069),
Antonia Clare (078), Nicholas Elliott (074),
Tracey Ross (076) and Kat Wheeler (077)

This is a wonderful opportunity to meet six local artists and discuss their work with them in detail. The trail offers a variety of artistic works, including painting, printmaking and ceramics. Several artists offer workshops, demonstrations and tuition. Beautiful village locations. Cafes, galleries and walks can be found at The Barns, in Glandford, where two of the artists are located.

Contact:
Antonia Clare | 07585 425465
antoniaclare@aol.com



CAPITAL CULTURE GALLERY

Celebrating local & international artists

Open hours during NOS 2023
September 26th - October 7th
Tuesday - Saturday
10am - 5pm

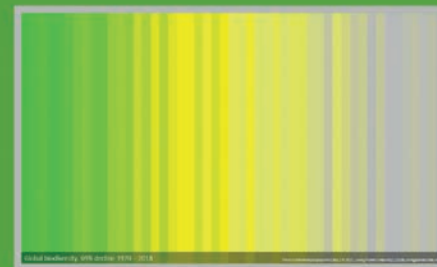
Matilda House | 30 High St | Coltishall | NR12 7AA | 01603 736954 | www.capitalculturegallery.com



GREENHOUSE - GALLERY

OPENING TIMES AND WORKSHOP DETAILS @

www.Greenhousetrust.net



7000+

42-46 Bethel St. Norwich NR2 1NR

Tessa Fox Martin Langford Rory Mcshane Peter Offord Tigger Doreen Wells



The Greenhouse Trust Fund
Charity No. 1037992

Paul Bassham Charitable Trust

ENJOY 10% OFF INSTORE*

For all your Art Supplies, Stationery and Printing

Instore services include: Binding, Photocopying, Printing, Black & White Copying up to A0, Laminating up to A3

*On production of this original advert. One discount usage per person, per purchase. Cannot be exchanged for cash. Not to be used in conjunction with any other offer. Excludes printer ink and toners, gift cards and stamps.



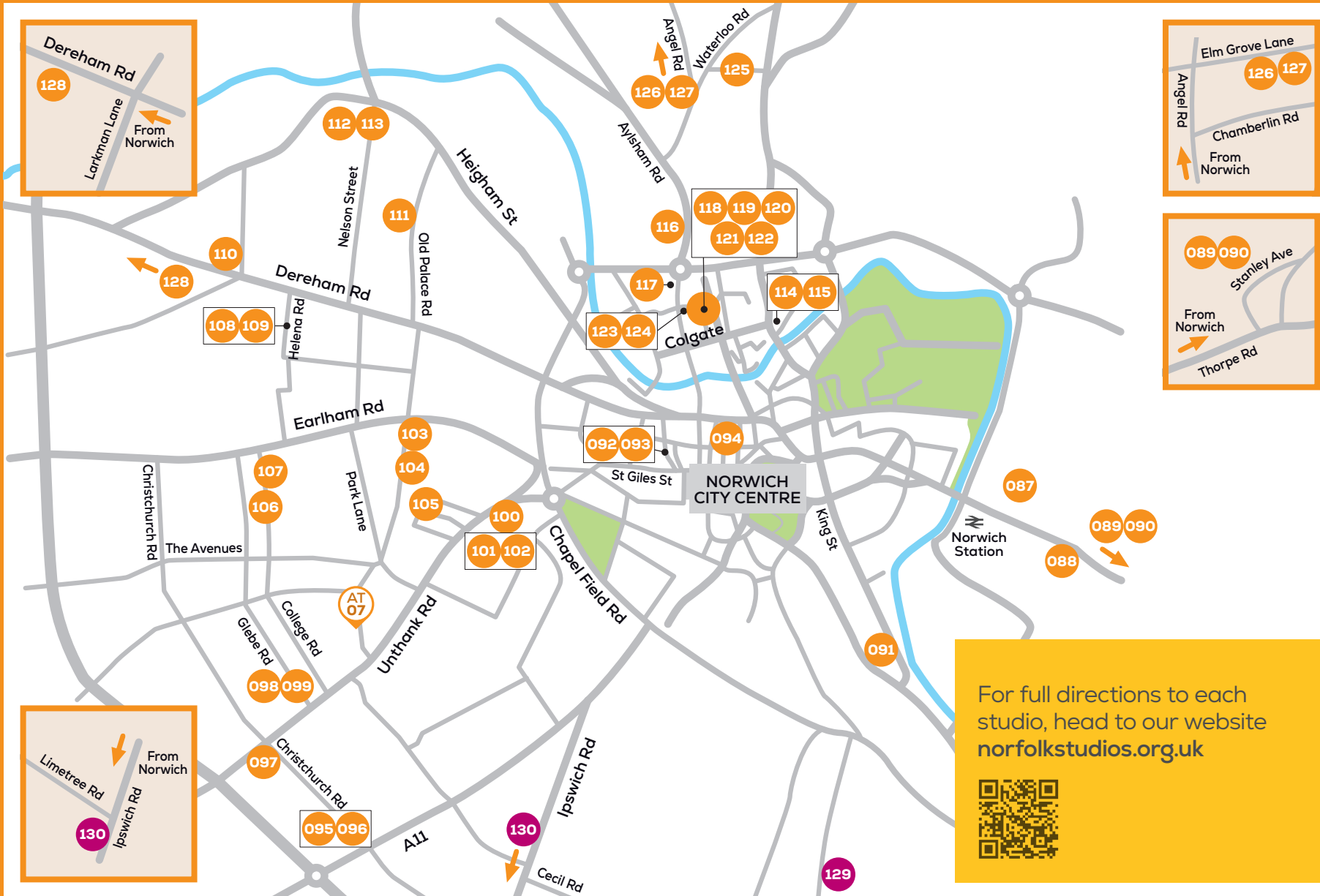
JARROLD

EXCHANGE STREET
NORWICH
JARROLD.CO.UK

Jarrold Stationery & Art is located adjacent to the Jarrold main store, opposite Thorns DIY.

NORWICH

Studios open
10am–5pm
(unless stated)



087 CAROLINE CHOUER-TISSIER

SEP 23 24 25 26 27 28 29 30 OCT 1 2 3 4 5 6 7 8

Hand-built and slip-cast work in clay. Fire polished glass. Cast bronze. Exploring disruption.

83 Rosary Road,
Norwich NR1 1TG
07906 678393
chouletissier@icloud.com
chouletissier.com
2022.rca.ac.uk/students/
caroline-jane-chouer-tissier

GWVTC 



088 JIM BROWN

SEP 23 24 25 26 27 28 29 30 OCT 1 2 3 4 5 6 7 8

Sculpture, printmaking and drawing. Abstract chaotic mix of geometric and random forms, mostly in concrete.

Ground Floor Flat,
33b Thorpe Road,
Norwich NR1 1UH
07938 555398
jimbrown67@btinternet.com
jimbrown1.weebly.com/

GWVTC 



089 EDEN BURDETT

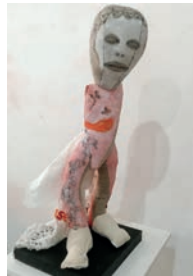
SEP 23 24 25 26 27 28 29 30 OCT 1 2 3 4 5 6 7 8

Open by appointment Mon 25–Thu 28 Sep

My textiles ask questions about what we claim as identity, including choice and tribalism.

12 Stanley Avenue,
Norwich NR7 0BE
07977 907532
edenburdettartist.co.uk

GWVTC  NEW



090 KATHRYN ROSS

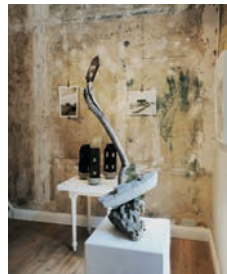
SEP 23 24 25 26 27 28 29 30 OCT 1 2 3 4 5 6 7 8

Open by appointment Mon 25–Fri 29 Sep

Mixed media sculpture and photography exploring displacement, polarisation and loss of equilibrium in the 21st century.

12 Stanley Avenue
Norwich NR7 0BE
07816 841259
kathrynross500@gmail.com
kathrynrossartist.co.uk

GWVTC  NEW



For full directions to each studio, head to our website norfolkstudios.org.uk



091 ST ETHELDREDA ARTIST STUDIOS
 SEP 23 24 25 26 27 28 29 30 OCT 1 2 3 4 5 6 7 8

Richard Cleland, Frances Martin, Cora Shearing, Jude Chaney, Joey Lameche, Jeanne Gagnière, Linda Chapman, Jack Godfrey, Paul Meade, Fliss Cary, Poppy Mathews

Etheldreda artists are practitioners of painting, drawing, collage, installations, sculpture, photography, printing and ceramics. Some are teachers, organisers and run Life Drawing Workshops. An art show and event *The Model in The Graveyard* is included.

St Etheldredas Church, King Street, Norwich NR2 1DF
 07941 016607
 itiscleland@gmail.com
 steths.co.uk

GWVTC E



092 SALLY HIRST
 SEP 23 24 25 26 27 28 29 30 OCT 1 2 3 4 5 6 7 8

Paintings, original prints and artists books exploring the environment through mark making and textures.

First floor, 1 Upper Goat Lane, Norwich NR2 1EW
 07753 863490
 sallyhirst.co.uk

GV




093 GILL FORSBROOK
 SEP 23 24 25 26 27 28 29 30 OCT 1 2 3 4 5 6 7 8

Sculptural work in a range of materials including paper, wood and metal.

1 Upper Goat Lane Norwich NR2 1EW
 gillforsbrook@live.com

E NEW



094 LOUISE EMILY
 SEP 23 24 25 26 27 28 29 30 OCT 1 2 3 4 5 6 7 8

Mon-Tue & Thu-Sat 9:30am-5pm, Wed 11am-5pm, Sun 11:30am-4pm

Paintings with big swathes of golden opulence that transport you to a magical land far, far away.

Fairhurst Gallery, 17 Bedford Street, Norwich NR2 1AR
 hello@louiseemily.com
 louiseemily.com

VTC E




095 MEHMET IZBUDAK
 SEP 23 24 25 26 27 28 29 30 OCT 1 2 3 4 5 6 7 8

I am fascinated by the relationship between line and texture in the visual arts, and writing as textured line and a semiotic medium.

8 Christchurch Road, Norwich NR2 2AD
 07885 375876 | 01603 462054

C AT07



096 MARGARET IZBUDAK
 SEP 23 24 25 26 27 28 29 30 OCT 1 2 3 4 5 6 7 8

Much of my work explores the relationship between colour, texture and line.

8 Christchurch Road, Norwich NR2 2AD
 01603 462054
 margaret.izbudak@gmail.com

C AT07



097 ANNEMARIE STIRLING
 SEP 23 24 25 26 27 28 29 30 OCT 1 2 3 4 5 6 7 8

Mixed media and collage are used to create portraits, happy homes and illustrations of everyday life. 3D Wackywomen will be making their debut too.

264 Unthank Road Norwich NR2 2AJ
 07504 982761
 anniestirling123@gmail.com

GV AT07




098 LISA ALMOND
 SEP 23 24 25 26 27 28 29 30 OCT 1 2 3 4 5 6 7 8

Contemporary paintings exploring Abstraction, Light, Landscape and Meditation.

31 Glebe Rd, Norwich NR2 3JG
 07522 419629
 lisaalmondart.com

VC AT07



099 KATE LLEWELLIN
 SEP 23 24 25 26 27 28 29 30 OCT 1 2 3 4 5 6 7 8

Happy to have visitors at other times by arrangement

Hand made sterling silver jewellery, often inspired by natural forms.

5 Glebe Road, Norwich NR2 3JG
 07531 880453
 kate.llewellin@virginmedia.com

VC AT07



100 ANGELA LLORET
 SEP 23 24 25 26 27 28 29 30 OCT 1 2 3 4 5 6 7 8

I love painting the natural world around me, especially capturing light and water reflections.

34 Trory Street, Norwich NR2 2RH
 07771 817222
 angelaloretblackburn@gmail.com

GWVTC AT07




101 ROSE BRETtingham
 SEP 23 24 25 26 27 28 29 30 OCT 1 2 3 4 5 6 7 8

Other times by appointment

Wheel thrown functional tableware, and hand-built sculptural work inspired by wildlife.

9 Trory Street Norwich NR2 2RH
 07788 187883
 rose.brettingham.ceramics@gmail.com
 rosebrettinghamceramics.com

GVTC AT07




102 ROBERT LESTER
 SEP 23 24 25 26 27 28 29 30 OCT 1 2 3 4 5 6 7 8

Handmade functional woodenware from local, sustainably sourced wood.

9 Trory Street, Norwich NR22RH
 07551 511075
 bobbyspooner2020@gmail.com
 bobbyspooner.com

WCT AT07




103 SHIRLEY STONE
 SEP 23 24 25 26 27 28 29 30 OCT 1 2 3 4 5 6 7 8

Linoprinting, drypoint and monoprint. Colour prints using reduction and multiblock as well as traditional black and white.

4 Mill Hill Road, Norwich NR2 3DP
 07904 704849
 Shirley.stone@ntlworld.com

AT07



104 LINDA McFARLANE
 SEP 23 24 25 26 27 28 29 30 OCT 1 2 3 4 5 6 7 8

Contemporary and natural jewellery incorporating 3D printing, laser-cutting, painting, stone, shell, wood, glass, rubber, perspex, and aluminium.

44 Mill Hill Road, Norwich NR2 3DP
 01603 622312
 lindamcf@yahoo.co.uk
 lindamcfarlane.co.uk

GVC AT07




105 MATTHEW BOWLES
 SEP 23 24 25 26 27 28 29 30 OCT 1 2 3 4 5 6 7 8

I like to paint in oils the modest beauty of familiar buildings and places.

3 Bathurst Road Norwich NR2 2PP
 07716 098268
 m.bowles@hotmail.co.uk

C AT07



106 JOHN BARDELL
 SEP 23 24 25 26 27 28 29 30 OCT 1 2 3 4 5 6 7 8

Oil paintings, drawings, glass and stone sculpture.
 200 College Road, Norwich NR2 3JA
 01603 456602
 carolinebardell@talktalk.net
GWVC AT07 **NEW**



110 JOCELINE WICKHAM
 SEP 23 24 25 26 27 28 29 30 OCT 1 2 3 4 5 6 7 8

Interesting contemporary still life paintings in oils.
 293 Dereham Road, Norwich NR2 3TH
 07909 971774
 jocelinewickham@gmail.com
 jocelinewickham.co.uk
VG AT07



107 JENNIE DURANT
 SEP 23 24 25 26 27 28 29 30 OCT 1 2 3 4 5 6 7 8

Beautiful smoke fired vessels and raku fired pots thrown on the wheel.
 231 College Road, Norwich NR2 3JD
 07528 314468 | 01603 504732
 jennie.durant@hotmail.com
 jenniedurant.co.uk
GV AT07



111 DIANA LAMB
 SEP 23 24 25 26 27 28 29 30 OCT 1 2 3 4 5 6 7 8

Sun 1-6pm
 Still continuing works based on plants, flowers, and gardens. Still lifes in addition. Work from sketchbooks of horse racing from TV started during the pandemic.
 67 Old Palace Road, Norwich NR2 4JN
 01603 667302
 diana.lamb@virginmedia.com
 diana-lamb.co.uk
GWVTC



108 GAIA SHAW
 SEP 23 24 25 26 27 28 29 30 OCT 1 2 3 4 5 6 7 8

Intaglio prints, watercolours, pigment paintings. sea-shore and garden cyanotype using wind, wave, weather.
 37 Helena Road, Norwich NR2 3BY
 07804 447123
 Gsprint710@outlook.com
 gaiashaw.co.uk
GVG AT07 **NEW**



112 FIONA FITZGERALD
 SEP 23 24 25 26 27 28 29 30 OCT 1 2 3 4 5 6 7 8

Ceramics: slab built, creating textured and patterned surfaces as a starting point for making form.
 1 St Bartholomews Close, Norwich NR2 4DX
 07786 808516
 fitzgeraldfiona@gmail.com
 fionafitzgerald.carbonmade.com
WVTC




109 LIZ HARTLEY
 SEP 23 24 25 26 27 28 29 30 OCT 1 2 3 4 5 6 7 8

Printmaker working mainly in linocut, aiming to capture the atmosphere and mood of the landscapes of East Anglia.
 37 Helena Road, Norwich NR2 3BY
 lizhartleyprints@gmail.com
AT07 **NEW**



113 BEN ALDEN
 SEP 23 24 25 26 27 28 29 30 OCT 1 2 3 4 5 6 7 8

Emotive figurative paintings created with an immersive use of light, colour, and composition.
 199 Nelson Street, Norwich NR2 4DU
 07966 139975
 ben.d.alden@googlemail.com
 benalden.co.uk
GWVTC



114 ANTEROS ARTS FOUNDATION
 SEP 23 24 25 26 27 28 29 30 OCT 1 2 3 4 5 6 7 8

Craig J Frost, Julia Tooley, Helen Vine, Ali Marron, KatriK Design, Orit Croft, June Croll, Liz Brandon Jones
 Discover Anteros Arts Foundation. Four floors of artists studios open to the public, two galleries including Anteros artists open studios exhibition, the Merchant's House cafe and courtyard all housed in an historic merchant's house. Showcasing painting, prints, textiles and collage.
 Anteros Arts Foundation,
 11-15 Fye Bridge Street, Norwich NR3 1LJ
 01603 766129
 enquiries@anteros.co.uk
 anterosfoundation.com
GV T



115 RACHEL COLLIER-WILSON
 SEP 23 24 25 26 27 28 29 30 OCT 1 2 3 4 5 6 7 8

Private View Thu 28 Sep, 6-8pm
 Eclectic subject matter portrayed with printmaking and drawing using my exuberant line, suggesting a narrative.
 Anteros Arts Foundation,
 11-15 Fye Bridge Street, Norwich NR3 1LJ
 01603 766129
 rachel@creativewithline.com
 creativewithline.com
GW C



116 OLIVIA JEFFRIES
 SEP 23 24 25 26 27 28 29 30 OCT 1 2 3 4 5 6 7 8

Sun open until 3pm
 Jewellery and textile artist, weaver of creativity.
 Unit 27, Fitt Signs & Graphics, 60-62 Pitt Street, Norwich NR3 1DF
 07949 657068
 info@oliviajeffries.co.uk
 oliviajeffries.co.uk
GV



117 PETRA BOASE
 SEP 23 24 25 26 27 28 29 30 OCT 1 2 3 4 5 6 7 8

Risograph print designer. Showcasing one-off prints, and products that are created from the prints.
 Studio 13, First Floor, The Hub, St Marys House, Duke Street, Norwich NR3 1QA
 07956 345107
 info@petraboase.com
 petraboase.com
WTC **NEW**



118 RUPERT MALLIN
 SEP 23 24 25 26 27 28 29 30 OCT 1 2 3 4 5 6 7 8

Experimental work in two and three dimensions, and art in little boxes returns.
 Studio 1b, Muspole Workshops, 25-27 Muspole Street, Norwich NR3 1DJ
 07775 870392
 rupertmallin.co.uk
T



119 JENNI MURPHY
 SEP 23 24 25 26 27 28 29 30 OCT 1 2 3 4 5 6 7 8

Vibrant acrylic paintings on panel. Sharing stories which spark happiness and memories through their joyful positive outlook.
 Studio 2, Muspole Workshops, 25-27 Muspole Street, Norwich NR3 1DJ
 07969 624228
 hello@jennimurphy.com
 jennimurphy.com
GV T



120 LISA BIRD
 SEP 23 24 25 26 27 28 29 30 OCT 1 2 3 4 5 6 7 8

Mixed media, textile, collage and collagraph. Sewing into canvas, fabric and paper.
 Studio 11, Muspole Workshops, 25-27 Muspole Street, Norwich NR3 1DJ
 07447 541339 | 01603 411355
 artbird2@btinternet.com
VG



121 MARTIN MITCHELL ARE
SEP 23 24 25 26 27 28 29 30 OCT 1 2 3 4 5 6 7 8

Internationally acclaimed mezzotint artist. Working in the traditional process of mezzotint, producing representational landscapes.

Studio 27b, Muspole Workshops, 25-27 Muspole Street, Norwich NR3 1DJ
 martinmezzotint@yahoo.co.uk

GV



125 ELLA GOODWIN
SEP 23 24 25 26 27 28 29 30 OCT 1 2 3 4 5 6 7 8

Other days available by appointment

Illustration and design using both traditional and digital techniques alongside textiles, stitch and creative writing. Access from back via Shipstone Rd.

25 Albany Road, Norwich NR3 1EE | 07789 924427
 ellajanegoodwin@gmail.com
 ellagoodwin.co.uk

GWVTC



122 HAZEL DAVISON
SEP 23 24 25 26 27 28 29 30 OCT 1 2 3 4 5 6 7 8

Contemporary jewellery in precious metals and gemstones. Influenced by Art Deco and nature.

Studio 8, Muspole Workshops, 25-27 Muspole Street, Norwich NR3 1DJ
 07775 995772
 hazeljewellery@yahoo.co.uk

VG



126 SUSAN RUDLING
SEP 23 24 25 26 27 28 29 30 OCT 1 2 3 4 5 6 7 8

Take a walk through the garden and find out what you can create using plants for dying, eco printing, and natural fibres for textile based projects.

57 Elm grove lane, Norwich NR3 3LF | 07585 775469
 fibreartist74@gmail.com
 fibre-artist-susan-rudling.co.uk

WT E



123 LIZZIE KIMBLEY
SEP 23 24 25 26 27 28 29 30 OCT 1 2 3 4 5 6 7 8

Other times by appointment (please email)

Textile artist working with woven textiles, natural dyes and basketry to create contemporary craft pieces.

Lion House Studios, Muspole Street, Norwich NR3 1DJ
 lizziekimbley@gmail.com
 lizziekimbley.com

WTC



127 ELISABETH KOZMIAN
SEP 23 24 25 26 27 28 29 30 OCT 1 2 3 4 5 6 7 8

Open 10.30am-6pm

Colourful variety of creatures in prints, drawings, paper cuts / collages, paintings. Also trees and flowers.

34 Elm Grove Lane, Norwich NR3 3LF
 07769 404718 | 01603 461463
 ekozmiian@gmail.com

WVC E



124 KIRSTEN RILEY
SEP 23 24 25 26 27 28 29 30 OCT 1 2 3 4 5 6 7 8

Open 10.30am-4pm

Mixed Media abstract work.

Studio 29, First Floor, Lion House, Muspole Street, Norwich NR3 1DJ
 Kirstenriley96@gmail.com
 kirstenrileyart.com

GV



128 CHRISTINE ALLMAN
SEP 23 24 25 26 27 28 29 30 OCT 1 2 3 4 5 6 7 8

Thu and Fri 10am-4pm

Fine art painting, oil glazing/egg tempura, landscape, folds, layers, light, drawing, tuition, commissions.

The Garden Studio, 612 Dereham Road, Norwich NR5 8TE
 07504 853453 | 01603 743548
 chris.artree@gmail.com
 christineallman.com

GWVTC



129 LAKENHAM PRIMARY School
SEP 23 24 25 26 27 28 29 30 OCT 1 2 3 4 5 6 7 8

Open Thu 5: 4-7pm, Sat 7: 10-3pm

The children are excited to share their rich artwork reflecting the diversity of their community. The work ranges from our youngest children in Nursery to Year 6 showcasing the broad art curriculum at Lakenham Primary School.

Lakenham Primary School, City Road, Norwich NR1 2HL | 01603 877780
 office@lakenham.norfolk.sch.uk
 lakenhamprimaryschool.co.uk/Art

NEW



130 HARFORD MANOR School
SEP 23 24 25 26 27 28 29 30 OCT 1 2 3 4 5 6 7 8

Open 10am-2pm

Our summer term school topic was 'We're all going on a summer holiday'. Pupils aged 4-19 developed their own piece of artwork based on this theme, using a variety of different mediums.

43 Ipswich Road, Norwich NR2 2LN
 01603 451809



Norwich Art Trail

AT 07

GOLDEN TRIANGLE Art Trail

AREA KNOWN AS 'THE GOLDEN TRIANGLE' IN NORWICH

Open:
 See each artist's Open studio dates

Featuring:
 Lisa Almond (098), John Bardell (106), Rose Brettingham (101), Matthew Bowles (105), Jennie Durant (107), Liz Hartley (109), Margaret Izbudak (096), Mehmet Izbudak (095), Robert Lester (102), Kate Llewellyn (099), Angela Lloret (100), Linda McFarlane (104), Gaia Shaw (108), Annemarie Stirling (097), Shirley Stone (103) and Joceline Wickham (110)

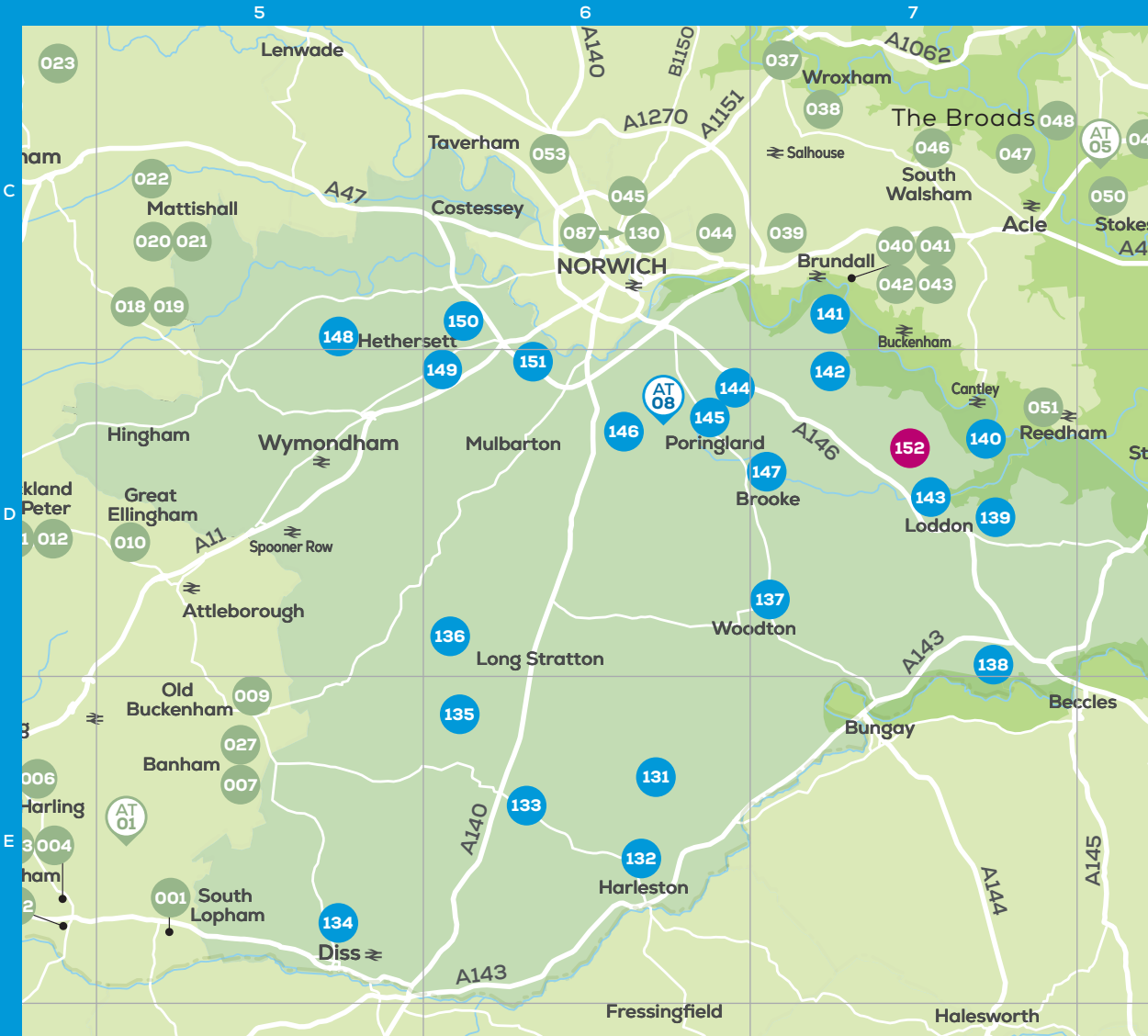
All the artist studios are within walking distance of each other and cover - painting, drawing, printmaking, glass, photography, mixed media, jewellery, ceramics and furniture/woodworking. There are many great cafes and pubs along the route.

Contact:
 Linda McFarlane | 01603 622312
 lindamcf@yahoo.co.uk
 @golden.triangle.art.trail
 Golden Triangle Art Trail



SOUTH NORFOLK

Studios open 10am–5pm (unless stated)



131 NICOLA SLATTERY MAP E6
 SEP 23 24 25 26 27 28 29 30 OCT 1 2 3 4 5 6 7 8

Paintings and limited edition prints from imagination by member of Royal Society of British Artists.

The Cartlodge, Mill Road, Alburgh, Harleston IP20 ODS 01986 788853
 artpeople@btopenworld.com
 nicolaslattery.com

GWVTC 



132 JANE ALDRIDGE MAP E6
 SEP 23 24 25 26 27 28 29 30 OCT 1 2 3 4 5 6 7 8

Colourful, vibrant abstract artwork combined with elements of script and calligraphy.

3 Briar Road, Harleston IP20 9DU 01379 851932
 aldridgecrafts.co.uk

GWVTC 



133 DEBBIE STOREY MAP E6
 SEP 23 24 25 26 27 28 29 30 OCT 1 2 3 4 5 6 7 8

Inspired by the natural world, Debbie enjoys creating bold, vibrant animal portraits primarily in acrylics.

The Doves, 3 Tattlepot Road, Pulham Market IP21 4TH 07751 620522
 debbie.storey@live.co.uk
 debbiessketchbook.co.uk/art-for-sale

GVTC  **NEW**



134 DESIGNERMAKERS21 MAP E5
 SEP 23 24 25 26 27 28 29 30 OCT 1 2 3 4 5 6 7 8

Annette Rolston, Birks Holden, Caroline Hyde-Brown, David Whatley, Janine Oxley, Joy Holden, Kate Welton, Karen Versfeld, Marie Mallen, Paul Sharrock, Rachel Wiles, The Saori Shed

Crafts centre, gallery and workshops. Wide range of craft practitioners share their studio spaces and display their work in the galleries. Visit to see them working, commission a piece or join a workshop to learn new skills.

21 St Nicholas Street, Diss IP22 4LB
 01379 640764 | info@designermakersCIO.org.uk
 designermakers21.co.uk | designermakerscio.org.uk

GWVTC  



135 CHLOE SCOTT MAP E6
 SEP 23 24 25 26 27 28 29 30 OCT 1 2 3 4 5 6 7 8

Woven designer creating handwoven and hand-dyed modern designs being made into home and lifestyle products.

4 Farrow Close, Great Moulton NR15 2HR 07786 986500 | 07786 986500
 chloescottdesign@outlook.com
 chloescottwovendesign.com

WVC  **NEW**



136 SARAH ALLEN MAP D6
 SEP 23 24 25 26 27 28 29 30 OCT 1 2 3 4 5 6 7 8

Ceramic sculpture, oil paintings, and mixed media still life paintings.

The Studio, Alborough Farm, Mill Road, Forncett St Peter NR16 1HX 07887 796032 | 01508 536835
 sarahallenartist@gmail.com
 sarahallenartist.com

VC 



For full directions to each studio, head to our website norfolkstudios.org.uk



137 SUE WILLMER MAP D7

SEP 23 24 25 26 27 28 29 30 OCT 1 2 3 4 5 6 7 8

Painting in oil, watercolour or acrylic. I aim to produce work that will interest the viewer.

Bridge Cottage,
The Street,
Woodton NR35 2LZ
07875 128514
wyckdwych@goopiesplace.plus.com

VC ATO8

**138 KATE WALKER** MAP D7

SEP 23 24 25 26 27 28 29 30 OCT 1 2 3 4 5 6 7 8

Contemporary landscape painting.

Myrtle Cottage,
48 The Street,
Geldeston,
Beccles NR34 0LB
07826 281511
katewalkerart.co.uk

GWVTC

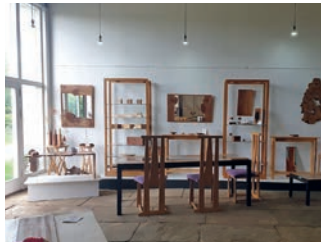
**139 THE ARBORETUM GALLERY** MAP D7

SEP 23 24 25 26 27 28 29 30 OCT 1 2 3 4 5 6 7 8

We are passionate about using interesting native woods to create unique pieces of furniture.

High House Farm Barn,
Farm Road,
Heckingham NR14 6QU
07729 868695 | 01508 333005
Enquiries@davidbartram
furniture.co.uk
arboretumgallery.co.uk

WVC

**140 AJ CONLIN** MAP D7

SEP 23 24 25 26 27 28 29 30 OCT 1 2 3 4 5 6 7 8

Open 10am-5pm

I am a sculptor who builds large interpretations of local wildlife from steel and found materials.

Paddock End Studios,
Hardley Street, Hardley,
Norwich NR14 6BY
07305 113353 | 01508 522155
gitchemanitou@hotmail.com

GWVC

**141 CHARLIE HAMPTON** MAP C7

SEP 23 24 25 26 27 28 29 30 OCT 1 2 3 4 5 6 7 8

Open 2-5pm

Landscapes from nature in oils and pastels.

Seekings, 64 The Street,
Surlingham NR14 7AJ
07549 753881 | 07549 753881

GC NEW

**142 ANDY JARRETT** MAP D7

SEP 23 24 25 26 27 28 29 30 OCT 1 2 3 4 5 6 7 8

Metal figurative and abstract sculptures for garden spaces and interiors, inspired by nature and in many different scales.

Broadview, 24 Surlingham Lane,
Rockland St Mary,
Norwich NR14 7HH
07784 110497 | 01508 538050
andyjarrettsculptor@gmail.com
Instagram: andyjarrettsculptor

GWVTC

**143 SUSAN COLOURS** MAP D7

SEP 23 24 25 26 27 28 29 30 OCT 1 2 3 4 5 6 7 8

My paintings in oil and coldwax are all about the beautiful Norfolk skies and countryside.

26 Oak Avenue,
Loddon NR14 6FU
07861 602792 | 07861 602792
Susan_colours@icloud.com
susancolours.art

WVT NEW

**144 SARA EDWARDS** MAP D6

SEP 23 24 25 26 27 28 29 30 OCT 1 2 3 4 5 6 7 8

Other times by appointment

Bright contemporary landscapes which play with the topography of Norfolk's countryside, Broads and beaches.

Gull Meadow, Gull Lane,
Framingham Earl, Norwich
NR14 7PN | 07518 352250
sara@gullmeadow.co.uk
saraedwardsart.co.uk

GWVTC E ATO8

**145 LOUISE BIRD** MAP D6

SEP 23 24 25 26 27 28 29 30 OCT 1 2 3 4 5 6 7 8

Open 10am-5pm

Printmaker inspired by bees, birds and plants. Exhibited at the Royal Academy Summer Exhibition 2019.

26 St Annes Road, Framingham
Earl, Norwich NR14 7TH
01508 495635
info@louisebird.co.uk
louisebird.co.uk

V ATO8

**146 PAUL COZENS** MAP D6

SEP 23 24 25 26 27 28 29 30 OCT 1 2 3 4 5 6 7 8

Acrylic landscapes inspired by shadows and light.

24 Long Lane,
Stoke Holy Cross
NR14 8LY
07548 644131
01508 492607

GV ATO8

**147 CLARE SPENDER** MAP D7

SEP 23 24 25 26 27 28 29 30 OCT 1 2 3 4 5 6 7 8

I am fascinated how thread can change the surface of any material.

23 The Street, Brooke,
Norwich NR15 1JW
07817 823017
clarespender@gmail.com
clarespender.com

GWVTC E ATO8 NEW

**148 RORY McSHANE** MAP C5

SEP 23 24 25 26 27 28 29 30 OCT 1 2 3 4 5 6 7 8

I am interested in the dance-like quality that trees show in different seasons.

2 Stone Cottages,
Wymondham Road,
Wrampingham NR18 ORZ
07990 856785
rorymshane.com

VGE

**149 OLIVER CLARKE** MAP D6

SEP 23 24 25 26 27 28 29 30 OCT 1 2 3 4 5 6 7 8

Sat and Sun 10am-5pm,
Mon-Fri 9am-3pm

Bespoke handmade furniture of contemporary design, creating collectable antiques of the future.

Twin Barn Farm,
Ketteringham Lane,
Hethersett NR9 3DF
07785 361895
oliver@oliverclarke.org
oliverclarke.org

VGC NEW

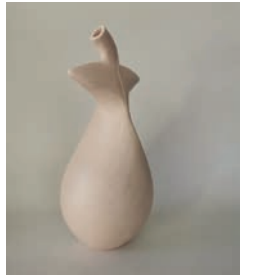
**150 CLARE CUMMINS** MAP C6

SEP 23 24 25 26 27 28 29 30 OCT 1 2 3 4 5 6 7 8

Hand built pieces using various clays, some locally dug, and oxides. Surfaces burnished.

2 Victory Cottages, Colney Lane,
Hethersett NR9 3BA
07722 310202
clarethepotter@gmail.com

VTC

**151 PENNY COULT HEATH** MAP D6

SEP 23 24 25 26 27 28 29 30 OCT 1 2 3 4 5 6 7 8

Plaques, jewellery glass artist producing bowls, vessels, jewellery and raku fired pots.

11 Patteson Close,
Cringleford NR4 6XX
07961 511177
01603 505060
pennycoult123@gmail.com
coultglass.co.uk

GWVTC

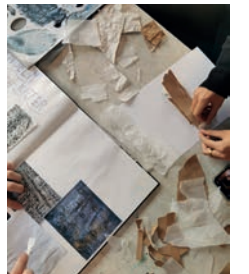
**152 LANGLEY School** MAP D7

SEP 23 24 25 26 27 28 29 30 OCT 1 2 3 4 5 6 7 8

An exciting exhibition celebrating current work from both the Senior and Prep Schools, set in the Langley Senior School Art Department. This is a joyful celebration of our creative curriculum, exploring a range of exciting materials and ideas.

Langley Park, Loddon NR14 6BJ
01508 520210
kbradbeer@langleyschool.co.uk

GC



South Norfolk Art Trail

Art Trail



BOUDICCA WAY

Art Trail
FRAMINGHAM EARL, STOKE HOLY CROSS,
BROOKE AND WOODTON

Open:
See each artist's Open studio dates

Featuring:
Louise Bird (145), Paul Cozens (146), Sara Edwards (144),
Clare Spender (147) and Sue Willmer (137)

Explore the countryside south of Norwich alongside the Boudicca Way path, which takes in the historic site of Caistor Roman Town. Meet artists working in acrylic, oil, watercolour, textile and print. Stop for refreshments at one of many good local cafes.

Contact:
Sara Edwards | 07518 352250
sara@gullmeadow.co.uk



8-17 Sep 2023
Heritage Open Days

Coordinated by



norfolkheritageopendays.co.uk



YOUR CHANCE TO WIN A £100 JARROLD VOUCHER

We want to hear about your experiences of Norfolk Open Studios 2023.

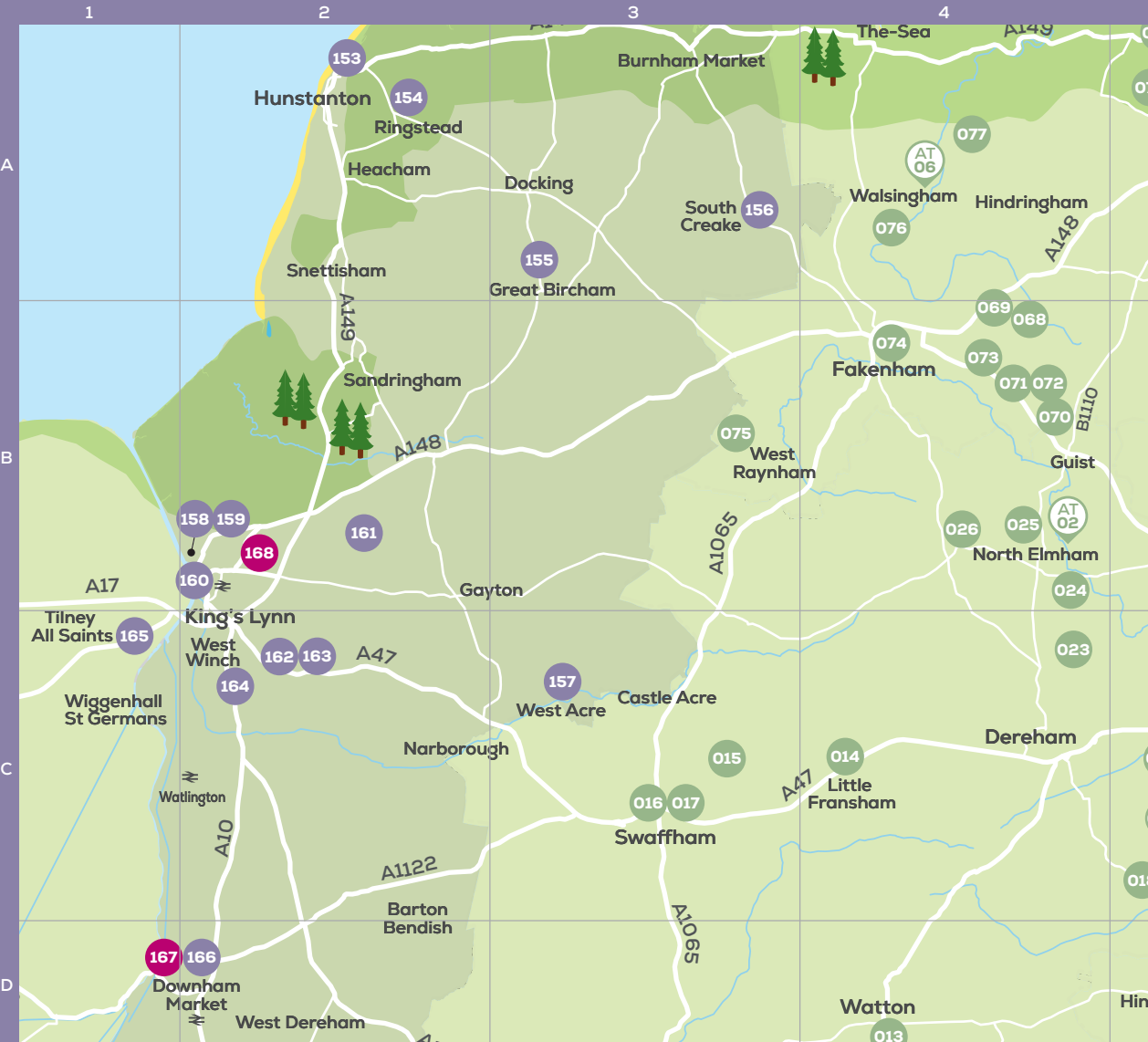
Go online and complete our visitor survey for your chance to win one of two £100 Jarrold vouchers.

norfolkstudios.org.uk

All responses help us to better understand our audiences and help shape and develop the event to make it even better in the future. Responses will remain anonymous. All completed surveys received by **Friday 27 October 2023** will be entered into a prize draw for a chance to win one of two £100 Jarrold vouchers. The winner will be notified by Friday 17 November.

WEST NORFOLK

Studios open 10am–5pm (unless stated)



153 EDMUND SPENCER MAP A2
 SEP 23 24 25 26 27 28 29 30 OCT 1 2 3 4 5 6 7 8

In the studio during the week
 Sculptor, performance artist turned painter.
 23 Golf Course Road, Old Hunstanton PE36 6JG
 07825 394350
 purdeys@yahoo.co.uk
GWC & **NEW**



156 RICARDO PIMENTEL MAP A3
 SEP 23 24 25 26 27 28 29 30 OCT 1 2 3 4 5 6 7 8

Fine art screen printing, photography and large scale works, mainly focused on the Norfolk coastline.
 Oliver's Tower, 31 Front Street, South Creake NR21 9PF
 07711 075471
 ricpimentel@btinternet.com
 ricardopimentel.co.uk
GVTC &

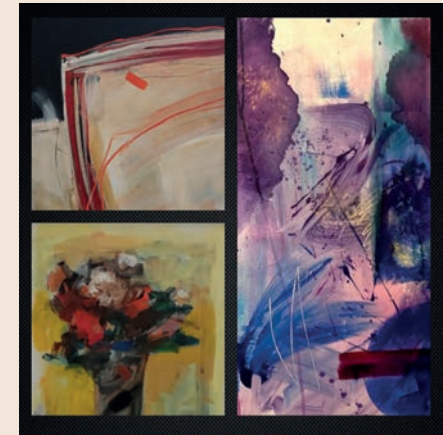
154 WILD FORM ARTISTS RINGSTEAD MAP A2
 SEP 23 24 25 26 27 28 29 30 OCT 1 2 3 4 5 6 7 8

Jane Brun, Helga Joergens, Barbara King, David Lendrum
 Four prominent Norfolk artists come together to celebrate Norfolk Open Studios. Individual yet complementary, united in their love of bold forms, colour and texture, their collective display promises to be exciting and inspiring.
 Ringstead Village Hall, High Street, Ringstead, Hunstanton PE36 5JU
 07584 476560 | 01485 525254
 helga@helgajoergens.co.uk | davidlendrum.co.uk
 barbaraking.co.uk | janebrunartist.com | helgajoergens.co.uk
VG &



157 WESTACRE THEATRE MAP C3
 SEP 23 24 25 26 27 28 29 30 OCT 1 2 3 4 5 6 7 8

Open 11am-3pm
 Emma Bennion, Avril Morris, David Morris
 Conceptual abstract, landscape and still life, in mixed media.
 Westacre Theatre, River Road, West Acre, Kings Lynn PE32 1UA
 01760 755007
 admin@westacretheatre.com | westacretheatre.com
GVTC & **NEW**



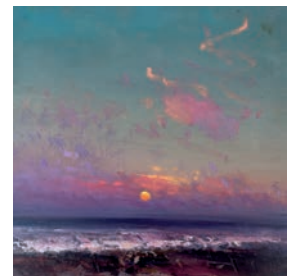
155 PETA WAINWRIGHT MAP A3
 SEP 23 24 25 26 27 28 29 30 OCT 1 2 3 4 5 6 7 8

Contemporary oil painter with a particular interest in light and colour. Specialising in Norfolk landscapes and coastal scenes. Don't follow postcode, go down track on Fring Rd, follow signs.
 Moor Farm Barn, Docking Road, Great Bircham PE31 6QP
 07784 537315
 petasw@hotmail.co.uk
 petawainwright.com
GV &



158 RICHARD K BLADES MAP B2
 SEP 23 24 25 26 27 28 29 30 OCT 1 2 3 4 5 6 7 8

Painter of atmospheric landscapes, inspired by the skies and light of Norfolk.
 Unit 5, Lake Business Centre, Crossbank Road, Kings Lynn PE30 2HD
 07593 371385
 richardkbladesartist.co.uk
 Instagram: richard.k.blades_art
GVVTC & **NEW**



159 ALAN DENNIS PEARL MAP B2
 SEP 23 24 25 26 27 28 29 30 OCT 1 2 3 4 5 6 7 8

Open by arrangement

Atmospheric abstract oil paintings – land and seascapes.

Room 13, Lake Business Centre, Crossbank Road, Kings Lynn PE30 2HD
 07775 861847
 apearl96@gmail.com
 alanpearlartworks.com

GWVTC **NEW**



163 JO ROLFE MAP C2
 SEP 23 24 25 26 27 28 29 30 OCT 1 2 3 4 5 6 7 8

Open other times by appointment

Stitched, printed, upcycled and hand-dyed textiles. Inspired by land and seascapes and regional crafts.

1 Parkhill, Fair Green, Middleton, King's Lynn PE32 1RJ
 07775 612135 | 01553 840000
 jorolfe77@btinternet.com

VG



160 GARRY HOBBS MAP B2
 SEP 23 24 25 26 27 28 29 30 OCT 1 2 3 4 5 6 7 8

Figurative paintings, real, unreal, curious and the strange using the human form, interiors and the landscape.

Hanse House, 8 S Quay, King's Lynn PE30 5GN
 07983 484441
 garry.j.hobbs@hotmail.com
 garryhobbs.co.uk

C



164 ANNE-MARIE MENSINK MAP C2
 SEP 23 24 25 26 27 28 29 30 OCT 1 2 3 4 5 6 7 8

Garden Ceramics: bulb, succulent and wall planters, bee-hotels, wind chimes and sculpture.

14 Sandover Close, West Winch, King's Lynn PE33 OSZ
 07940 545881
 anne-marie@mensink.co.uk

VTC



161 ELIZABETH INGER MAP B2
 SEP 23 24 25 26 27 28 29 30 OCT 1 2 3 4 5 6 7 8

Painting and weaving. Abstract landscapes in oils/ gouache/ acrylic. Textile art, weave and embroidery.

South View, Cliff-en-Howe Road, Pott Row, King's Lynn PE32 1BY
 07825 321955
 elizabeth.inger@sky.com

GVC **NEW**



165 PROGRESSION IN TEXTILES MAP C1
 SEP 23 24 25 26 27 28 29 30 OCT 1 2 3 4 5 6 7 8

Anita O'Neill, Ruth Holmes, Christine Booth, Marion Baker, Chris Hadfield, Deborah Wilkinson

A group of like minded textile artists getting together to encourage and support each others practice. Our aim is to explore our own work and exhibit the results.

Eau Brink Studio, Pullover Road, Tilney All Saints, King's Lynn PE34 4SG
 07827 674920 | 01553 611009
 anita@progressionintextiles.co.uk
 eaubrinkstudio.co.uk

GWV



162 TOBY WINTERINGHAM MAP B2
 SEP 23 24 25 26 27 28 29 30 OCT 1 2 3 4 5 6 7 8

All other times by appointment

Furniture items, clocks, mirrors, accessories and jewellery.

1 Parkhill, Fair Green, Middleton, King's Lynn PE32 1RJ
 07957 138567 | 01553 840000
 toby@tobywinteringham.co.uk
 tobywinteringham.co.uk

GVC



166 SUE WELFARE MAP D2
 SEP 23 24 25 26 27 28 29 30 OCT 1 2 3 4 5 6 7 8

I'm happy to open by prior arrangement

I am primarily a printmaker, creating work inspired by Norfolk's wildlife, coast and countryside.

The Lodge, Castle Yard, High Street, Downham Market PE38 9HF
 07717 220281 | 01366 388442
 sue.welfare@gmail.com

GWVT




167 NELSON Academy MAP D1
 SEP 23 24 25 26 27 28 29 30 OCT 1 2 3 4 5 6 7 8

Open Fri 3.30-5pm, Sat 10am-3pm

The students at Nelson have decided to create a range of artwork inspired by Light and Dark for our 2023 Open Studios exhibition. If previous years are anything to go by, there will be plenty to see and do and the popular Family Arty Activity Day on Saturday.

Nursery Road, Downham Market PE38 9PF



For full directions to each studio, head to our website norfolkstudios.org.uk




168 GAYWOOD Primary School MAP B2
 SEP 23 24 25 26 27 28 29 30 OCT 1 2 3 4 5 6 7 8

Open 3.15-5.15pm

Art Across the World. A collection of work produced by pupils across the school, from reception to Year 6. Exploring art around the world (including Chinese ceramics and Islamic patterns) work is created with mediums such as charcoal, acrylic and oil.

32 Field Lane King's Lynn PE30 4AY
 01553 774141 | r.rossiter@gaywoodprimary.co.uk



LOOKING TO UPDATE YOUR HOME THIS YEAR?

From a single room to a full home designed to suit you and your lifestyle
www.swankinteriors.co.uk | 07867 502212



Swank Interiors

Designing spaces since 2009



SUPPORT OUR WORK

Norfolk Open Studios is run by Norfolk & Norwich Festival through its Festival Connect & Create initiative.

Norfolk & Norwich Festival is a charity made up of one of the country's longest running arts festivals and a region-wide, year-round programme bringing valuable creative opportunities to, and with, children, young people and their communities.

If you are interested in the work that we do at the Festival and would like to find out more, there are a few ways that you can support us...

DONATE

Make a small donation to support the Festival's work with schools and young people.

JOIN OUR FAMILY

Festival Supporters get priority booking on Festival tickets, advance programme information and invitations to special Festival events that bring you closer to our work. All from as little as £15 per month.

WORK WITH US

We offer corporate partnerships for businesses of all sizes, providing excellent brand association, corporate entertainment and association with our artistic, community and environmental initiatives.

LEAVE A LEGACY

Remembering Norfolk & Norwich Festival in your will can leave a lasting legacy and help us build our work nurturing artists and supporting communities across Norfolk.

Find out more about supporting the Festival at nnfestival.org.uk/support-us

Or contact Development Manager Jess Cook at jess.cook@nnfestival.org.uk

NORFOLK & NORWICH
FESTIVAL

Principal Funders



Supported using public funding by
ARTS COUNCIL
ENGLAND



NORWICH
City Council

Norfolk & Norwich Festival registered charity No. 1164424

Interested
in taking part
in Norfolk
Open Studios
2024?

Email openstudios@nnfestival.org.uk

